



Thermo Scientific

HAAKE RheoWin

User guide

Installation and 21 CFR part 11 configuration

006-0783 Version 2.5

July 2014

Thermo
SCIENTIFIC

© 2013 Thermo Fisher Scientific Inc. All rights reserved.

Author: Jint Nijman

Thermo Fisher Scientific Inc. provides this document to its customers with a product purchase to use in the product operation. This document is copyright protected and any reproduction of the whole or any part of this document is strictly prohibited, except with the written authorization of Thermo Fisher Scientific Inc.

The contents of this document are subject to change without notice. All technical information in this document is for reference purposes only. System configurations and specifications in this document supersede all previous information received by the purchaser.

Thermo Fisher Scientific Inc. makes no representations that this document is complete, accurate or error-free and assumes no responsibility and will not be liable for any errors, omissions, damage or loss that might result from any use of this document, even if the information in the document is followed properly.

This document is not part of any sales contract between Thermo Fisher Scientific Inc. and a purchaser. This document shall in no way govern or modify any Terms and Conditions of Sale, which Terms and Conditions of Sale shall govern all conflicting information between the two documents.

Version history:

July 2012: German text completely rewritten and complemented (in Word Format).

August 2012: Document transferred to FrameMaker 10 format.

July 2013: Translated into English

July 2014: Adapted to RheoWin 4.50.00xx

Software-Requirements: HAAKE RheoWin 4.00.0000 or newer

Table of contents

Chapter 1	Introduction	1
Chapter 2	Installation	3
	Computer system (PC) requirements	3
	Operating systems requirements	3
	PC hardware requirements	3
	Windows access privileges requirements	4
	Compatibility with older RheoWin versions.	6
	Supported devices (rheometers, viscometers, circulators, etc.)	6
	Starting the installation.	7
	RheoWin versions 4.00.0000 to 4.30.00xx.	7
	RheoWin versions 4.40.0000 and newer	7
	Installing from the RheoWin CD-ROM	7
	Installing from a local directory on a harddisk	8
	The installation process	9
	Adding devices or software modules to an existing installation	18
	First program launch after new installation.	19
	Standard installation (without 21 CFR Part 11 tools).	19
	Installation with 21 CFR Part 11 tools	20
	Settings for 21 CFR Part 11	21
	Audit Trail	21
	User management.	21
	Signatures and storage settings	21
	User settings for Job and Data Manager	21
	Job settings.	22
	Installation of new RheoWin version	22
	Deinstallation of RheoWin.	23
Chapter 3	User management system	25
	Enabling user access control	25
	Standard installation (without 21 CFR Part 11 tools).	25
	Installation with 21 CFR Part 11 tools	26
	User account management system settings	26
	Users	27
	Groups	30
	Passwords	32
	Accounts.	33
	Administration	34

Chapter 4	Audit Trail	37
	General information	37
	Configuration	38
	Access database	38
	SQL database	39
	Database format	41
	Audit Trail viewer	42
Chapter 5	Signatures and security settings	43
	Settings for signatures	43
	Save options	44
	Deactivation in case of inactivity	45
	Signatures in JobManager	45
	Signing jobs	45
	Displaying the signatures	47
	Modifying a signed job	47
	Signatures in DataManager	47
	Signing data files and page files	47
	Displaying the signatures	48
	Editing signed data files and page files	48
Appendix A	Directories, files, registry	49
	Windows registry key	49
	Installation directories	49
	Directories for program *.exe, *.dll, etc. files	49
	Directories for program data files	50
	Directories for user files	51
Appendix B	User privileges	53
	General privileges (in Job- and DataManager)	53
	Privileges in JobManager	55
	Privileges in DataManager	56
	Index	59

Introduction

This manual describes both the standard installation of the ThermoScientific HAAKE RheoWin software (hereinafter referred to as RheoWin) and the installation of RheoWin in conjunction with the 21 CFR Part 11 tools.

The reason for this is that, on the one hand, certain parts of RheoWin (such as the User Management System) can also be used with a standard installation of RheoWin (i.e. without the 21 CFR Part 11 tools), while, on the other hand, the 21 CFR Part 11 tools (User Management System, Audit Trail and Signature functionality) must already be considered and configured during the installation of RheoWin.

Those parts of the installation that are only required and/or available when the 21 CFR Part 11 tools are installed are marked accordingly in the text. This concerns certain passages of [Chapter 2](#) (Installation) and [Chapter 3](#) (User management) as well as the entire [Chapter 4](#) (Audit Trail) and [Chapter 5](#) (Signatures and Security Settings).

This manual is based on RheoWin 4 version 4.50.0003. However, it applies to all RheoWin versions starting from version 4.00.0000 with the exception of some points that are mentioned in the text. For RheoWin versions later than version 4.50.0003, individual setup or software dialogs, etc., may be designed in a slightly different way, but the functional content is the same.

Installation

This chapter describes both the standard installation of RheoWin (that is without the 21 CFR part 11 tools) as well as the installation of RheoWin in combination with the 21 CFR part 11 tools.

Computer system (PC) requirements

Certain requirements regarding the PC hardware and the PC operating system must be fulfilled in order for the RheoWin installation to be successful and in order for RheoWin to be able to communicate with the various HAAKE rheometers, viscometers and temperature control systems.

Operating systems requirements

The RheoWin software only runs on a PC with a Microsoft Windows operating system.

RheoWin 4.50.00xx has been tested to run under the following Windows operating systems:

- Microsoft Windows XP, 32-bit, with or without Service pack 1, 2 or 3.
- Microsoft Windows 7, 32-bit or 64-bit, with or without Service pack 1.
- Microsoft Windows 8, 32-bit or 64-bit.
- Microsoft Windows 8.1, 32-bit or 64-bit.

RheoWin 4.50.00xx has *not* been tested and is consequently *not* supported for use under the following Windows operating systems (It is strongly recommend to use Windows 7 or newer instead):

- Microsoft Windows Vista, 32-bit or 64-bit, with or without Service pack 1 or 2.

RheoWin 4 does *not* run and/or is *not* supported under the following Windows operating systems:

- Windows 3.x and Windows NT 3.x.
- Windows 95, Windows 98 and Windows 98 SE, Windows ME.
- Windows NT 4.0 and Windows 2000.

PC hardware requirements

No special PC is required for the convenient use of RheoWin. A PC meeting the requirements of the respective operating system for an office PC is fully suitable for the purpose.

As of July, 2013, the following configuration is recommended:

- An IBM compatible PC with a 2,5 GHz (or faster) processor).
- At least 4 GB RAM of main memory.
- A hard disk with a minimum of 2 GB available free space (or 10 GB if the RheoScope 1 or the RheoScope Module or another camera is used).
- A CD-ROM drive.
- A 19" (or larger) monitor with a resolution of 1280x1024 pixel (a minimum resolution of 1024x768 pixel is mandatory).
- A keyboard and a mouse.

For the communication with a viscometer or a rheometer and with temperature control systems (circulators), cameras, etc., the following ports are required:

- For the HAAKE MARS II and HAAKE MARS III rheometer:
 - Ethernet TCP/IP interface ¹.
 - Serial (RS232) interface (or a USB interface in combination with an USB to RS232 adapter), for older temperature control systems (circulators),
 - USB interface for newer temperature control systems (circulators).
 - 6-pin IEEE 1394a interface for the RheoScope module camera.
We recommend the use of a PC with an IEEE 1394 interface which is integrated on the PC mainboard or the use of the IEEE 1394 interface card that Thermo Fisher Scientific supplies as an optional accessory.
 - USB interface for a WDM compatible camera (WebCam).
- For the HAAKE Viscotester iQ rheometer:
 - Ethernet TCP/IP interface ².
- For all other rheometers and viscometers:
 - A serial (RS232) port or a USB port with an USB to RS232 adapter for the rheometer or viscometer.
 - A serial (RS232) port or a USB port with an USB to RS232 adapter for older temperature control systems (circulators).

Windows access privileges requirements

IMPORTANT Both during the *installation* of RheoWin and during *normal operation* of the RheoWin software *read and write privileges* must be available for the following directories and subdirectories as well as for a certain Windows registry key:

- Directories under Windows XP (German version)

¹ Two Ethernet TCP/IP ports are required if it is intended to also connect the PC on which RheoWin is installed to a network (corporate network or Internet)

- C: \Dokumente und Einstellungen\All Users\Gemeinsame Dokumente\Thermo\RheoWin
- C: \Dokumente und Einstellungen\All Users\Anwendungsdaten\Thermo\RheoWin
- Directories under Windows XP (English and other language versions)
 - C: \Documents and Settings\All Users\Documents\Thermo\RheoWin
 - C: \Documents and Settings\All Users\Application Data\Thermo\RheoWin
- Directories under Windows Vista, Windows 7 and Windows 8 (German version)
 - C: \Benutzer\Öffentlich\Öffentliche Dokumente\Thermo\RheoWin
 - C: \ProgramData\Thermo\RheoWin
- Directories under Windows Vista, Windows 7 and Windows 8 (English and other language versions)
 - C: \Users\Public\Public Documents\Thermo\RheoWin
(or C: \Users\Public\Documents\Thermo\RheoWin depending on the representation in Windows Explorer.)
 - C: \ProgramData\Thermo\RheoWin
- Windows registry key (all Windows versions)
 - HKEY_USERS\.\DEFAULT\Software\Thermo\RheoWin

IMPORTANT During the *installation* of RheoWin unrestricted *write privileges* must be available for the following directory and all of its sub-directories. This means that Windows administrator privileges are needed for the installation of RheoWin.

- For english and other language 32-bit Windows versions:
 - C: \Program Files\Thermo\RheoWin
- For english and other language 64-bit Windows versions:
 - C: \Program Files(x86)\Thermo\RheoWin
- For german 32-bit Windows versions:
 - C: \Programme\Thermo\RheoWin
- For german 64-bit Windows versions:
 - C: \Programme(x86)\Thermo\RheoWin

After a successful installation, Windows users of the default **Administrator Group** and **Power User Group** should directly be able to use the RheoWin software. Windows users of the default **User Group** must be granted read and write access to the RheoWin folders and Windows registry key mentioned above by an administrator.

For more information on the directories and the files in those directories which RheoWin uses see “[Installation directories](#)” on [page 49](#).

Compatibility with older RheoWin versions

RheoWin can be installed parallel to existing installations of older versions of RheoWin, *but only when* the major version numbers of the individual versions are different. This means, for example, that RheoWin 4.xx.xxxx can be installed parallel to RheoWin 3.xx.xxxx and/or RheoWin 2.xx, but not parallel to RheoWin 4.10.xxxx or RheoWin 4.20.xxxx, etc.

RheoWin 4.xx.xxxx, RheoWin 3.xx.xxxx and RheoWin 2.xx must always be installed in different directories.

Only one version of RheoWin can run on one PC at the same time.

A newer RheoWin version can always read all data (*.rwd), job (*.rwj) and page (*.rwp) files as well as all template files of older versions (backward compatibility). An older version will not be able to read a file after it has been saved once by a newer version.

An older version of RheoWin can *not* import any data (*.rwd), job (*.rwj) and page (*.rwp) files or template files from newer versions (no forward compatibility).

The RheoWin installer provides users with the option to migrate all settings of a previous version of RheoWin (from version 3.21), except for settings regarding sizes and units (see „[Installation of new RheoWin version](#)“).

Supported devices (rheometers, viscometers, circulators, etc.)

Table 1 lists the rheometers, viscometers, temperature control systems and circulators that can be controlled by RheoWin.

Table 1. Devices that are supported by RheoWin

Rheometer	Viscometer	Circulators	Temperature control devices
MARS III	Viscotester iQ	SC150, AC200	UTMC
MARS II		PC300	MTMC (MARS III)
RheoStress 6000	VT D, VT E	ACCEL	Rheonaut
RheoStress 3000			RheoScope
RheoStress 600	RotoVisco 1	Dynamax	
RheoStress 300			CTC
RheoStress 1	VT550	Phoenix	UTC
RheoScope 1			TC501
RS150	VT7L-plus	DC30, DC50	TC81
RS80	VT6L-plus	DC5	TC500
RS75	VT6L, VT6R	F8, N8	TC80
RT20	VT7L, VT7R	F6, N6	TP1800 ^a

^a Starting from RheoWin version 4.40.0000 the TP1800 is not supported anymore.

It should be noted that a RheoWin registration key is always device-specific, i.e. only the software driver (the link between RheoWin and the device, so to say) for a certain rheometer or a viscometer is installed. The drivers for all temperature control systems, circulators and other ancillary equipment that are compatible with the installed rheometer or viscometer can be selected and, if required, installed during installation.

Older HAAKE devices that are not shown in the list above may be supported by earlier versions of RheoWin, see www.rheowin.com.

Starting the installation

The Rheowin software cannot be run from the data-carrier (CD) and must be installed before it can be used. It is recommended to reboot the computer prior to starting the installation.

The RheoWin setup should always be executed locally, i.e. directly from the CD-ROM in the (local) CD-ROM drive or from a local directory on the PC on which RheoWin is to be installed. The installation files should *not* be copied to a network drive first and the installation started from there.

RheoWin versions 4.00.0000 to 4.30.00xx

For these RheoWin version a possibly already installed older RheoWin version 4.xx.xxxx must be *deinstalled* before a new version can be installed.

The settings of the previously installed version can be used for the new installation if required, see “[Use settings from previous installation](#)” on [page 11](#).

RheoWin versions 4.40.0000 and newer

Starting from RheoWin 4.40.000 a newer version can be installed without deinstalling the previously installed older version, as long as the older version was RheoWin 4.20.0000 or newer. In this case the settings of the previously installed version are automatically transferred to the new version.

An existing installation of RheoWin version 4.00.0000 to 4.10.00xx however *must* be deinstalled before RheoWin version 4.40.0000 or newer version can be installed. In this case it is *not* possible to transfer the settings from the previous version to the new version.

Installing from the RheoWin CD-ROM

In order to start the installation process, the RheoWin CD-ROM is inserted into the CD-ROM drive. Normally, the default web browser (such as, e.g., Internet Explorer) will then automatically be launched and the screen shown below will be displayed.

Figure 1. RheoWin CD start screen



The RheoWin installation is started by clicking on the text **Install HAAKE RheoWin 4.**

If the default web browser does not start automatically, you can either run the Start.bat program in the main directory of the CD-ROM or load the Index.htm file in the HTML directory on the CD-ROM in a browser to open the page (the RheoWin CD start screen) shown above. Another option to start the installation process is to directly launch the Setup.exe program from the RheoWin directory on the CD-ROM.

Installing from a local directory on a harddisk

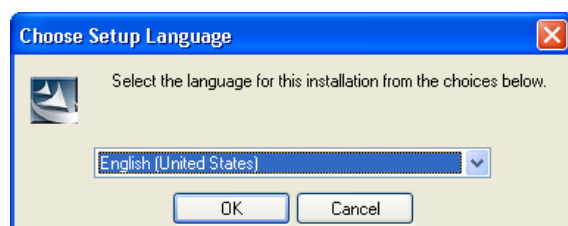
The latest RheoWin version can always be downloaded from the www.rheowin.com web-page.

In case the RheoWin installation files were downloaded from the Internet to a local directory on the PC's harddisk drive (or USB drive) or were already stored (locally) on the PC due to other circumstances, then the installation can also be started by launching the Setup. exe program from that local directory.

The installation process

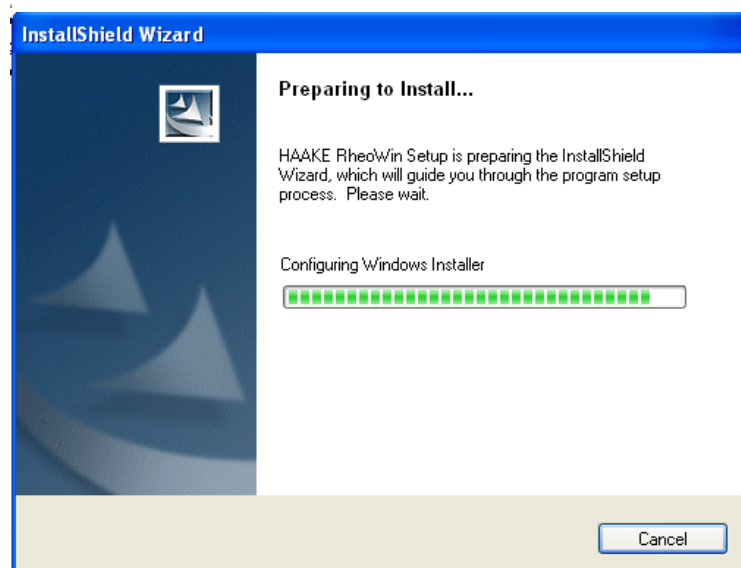
After starting the installation, the dialogue language for the installation process must be selected first. This language is also automatically preset for RheoWin. The RheoWin dialogue language can be changed at any time in the RheoWin software.

Figure 2. Choose setup language



As soon as this step is completed, the InstallShield Wizard is launched.

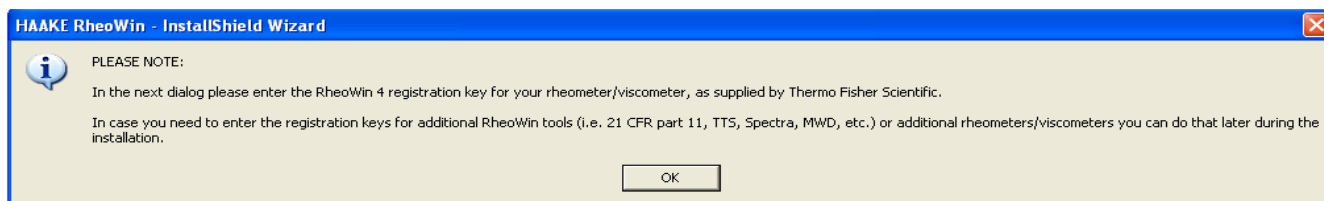
Figure 3. Installation preparation



The installation process is then prepared. This can take a relatively long time, depending on the computer configuration and the operating system.

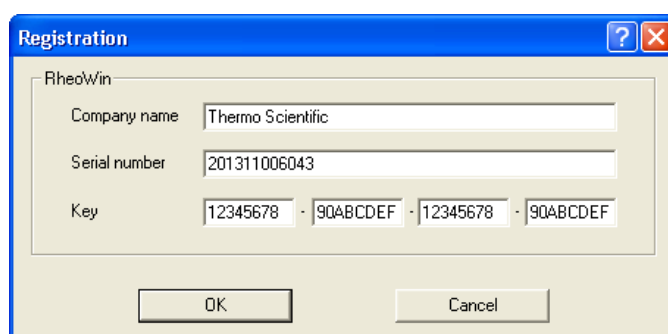
During the installation of RheoWin, it is first necessary to enter a valid registration key (license key) for a measurement device or the Data Manager. When this action is completed, up to 19 additional registration keys for other measurement devices and/or RheoWin modules (such as 21 CFR Part 11 tools, TTS, Spectra, MWD, etc.) can be entered.

Figure 4. Please note, enter registration key



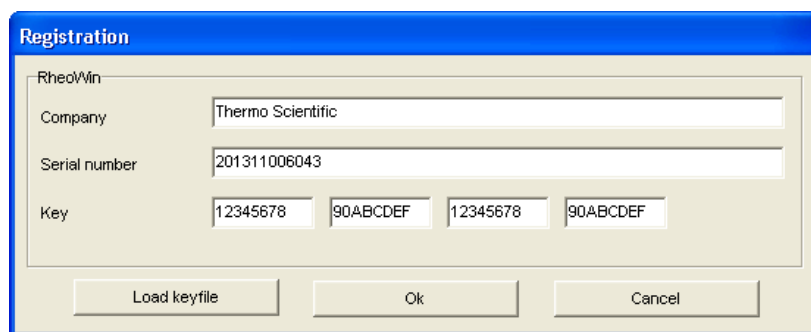
A RheoWin registration key consists of the **Company name**, **Serial number** and **Key**. This information must be entered in the appropriate fields in the **Registration** dialog (Figure 5). When entering the company name and serial number, please note that these are both case sensitive. Case sensitivity does not apply to the key itself. The key must be entered edit-field by edit-field.

Figure 5. Enter registration key (upto RheoWin 4.30.00xx)



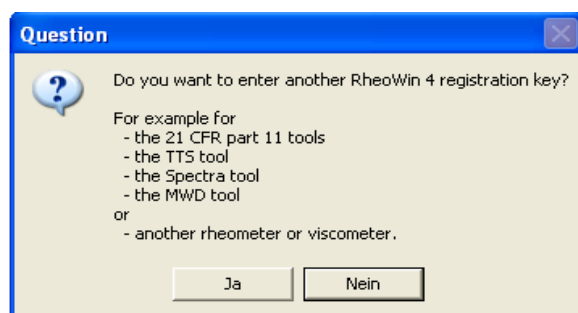
Starting from RheoWin version 4.40.0000 the **Registration** dialog has been slightly modified (Figure 6). By clicking on the **Load keyfile** button the complete registration key information can be read from an appropriate key-file. The complete key can be entered by cut & paste in the first key edit-field.

Figure 6. Enter registration key (starting from RheoWin 4.40.0000)



Other registration keys can then be entered for other rheometers/viscometers or RheoWin modules, such as the 21 CFR Part 11 tools, in any sequence desired. The company name, serial number and key must always be entered completely for each registration key.

Figure 7. Enter another registration key



Use settings from previous installation

Installation of RheoWin versions 4.00.0000 to 4.30.00xx

The following dialog of the RheoWin installer gives the user the option to migrate all settings of a previous version of RheoWin (starting from version 3.21) except for those settings concerning sizes and units (see „[Installation of new RheoWin version](#)“).

Figure 8. Use settings from previous installation



This option should *not* be used if issues were experienced with the previous installation, because in this case there is the risk that these issues are transferred to the new installation.

Installation of RheoWin versions 4.40.0000 and newer

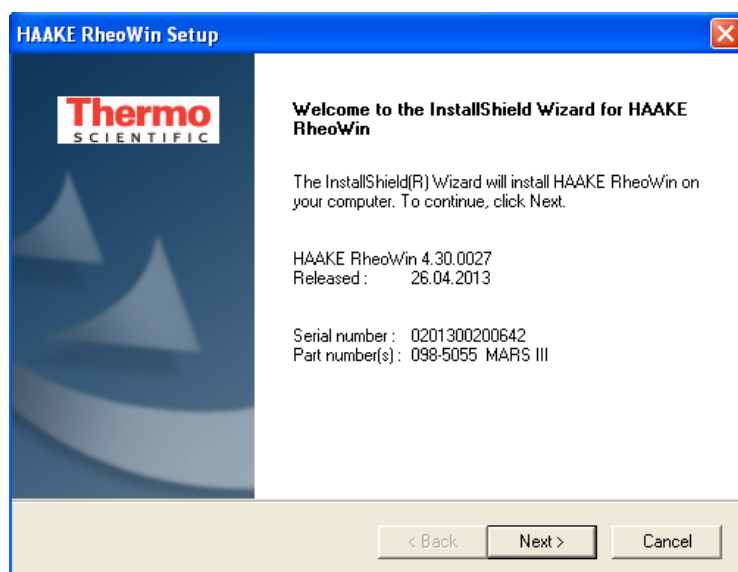
Starting from RheoWin 4.40.000 a newer version can be installed without deinstalling the previously installed older version, as long as the older version was RheoWin 4.20.0000 or newer. In this case the settings of the previously installed version are automatically transferred to the new version.

An existing installation of RheoWin version 4.00.0000 to 4.10.00xx however *must* be deinstalled before RheoWin version 4.40.0000 or newer version can be installed. In this case it is *not* possible to transfer the settings from the previous version to the new version.

Welcome dialog

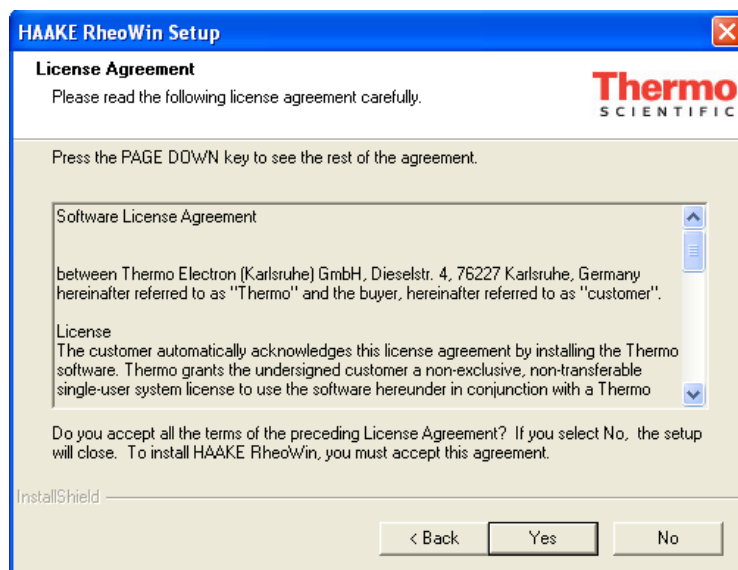
Once all registration keys are entered, the Welcome dialog will appear.

Figure 9. Welcome dialog



This window displays the following information: The RheoWin version number, serial number (of the first registration key that was entered), measurement devices to be installed, optional modules to be installed and the software expiration date (the latter only applies to demo versions).

Figure 10. License agreement



In the following dialogs, the various installation options must be configured.

Dialog customer information

This dialog allows to select whether the RheoWin software is to be installed only for the user currently logged-on to the operating system or for all users who logon to the computer (operating system).

Figure 11. Customer information

HAAKE RheoWin Setup

Customer Information
Please enter your information.

User Name:
Thermo

Company Name:
Thermo Scientific

Install this application for:

☒ Anyone who uses this computer (all users)
☐ Only for me (Thermo)

InstallShield

< Back Next > Cancel

It is recommended to use the default setting **Anyone who uses this computer (all users)**.

Dialog choose destination location

This dialog provides the option to select the **Destination Folder** (directory) where RheoWin is to be installed. The dialog for the directory selection can be accessed by clicking on the **Browse...** button.

Figure 12. Choose destination location (folder)

HAAKE RheoWin Setup

Choose Destination Location
Select folder where setup will install files.

Setup will install HAAKE RheoWin in the following folder.
To install to this folder, click Next. To install to a different folder, click Browse and select another folder.

Destination Folder
C:\Program Files\Thermo\RheoWin\ Browse...

InstallShield

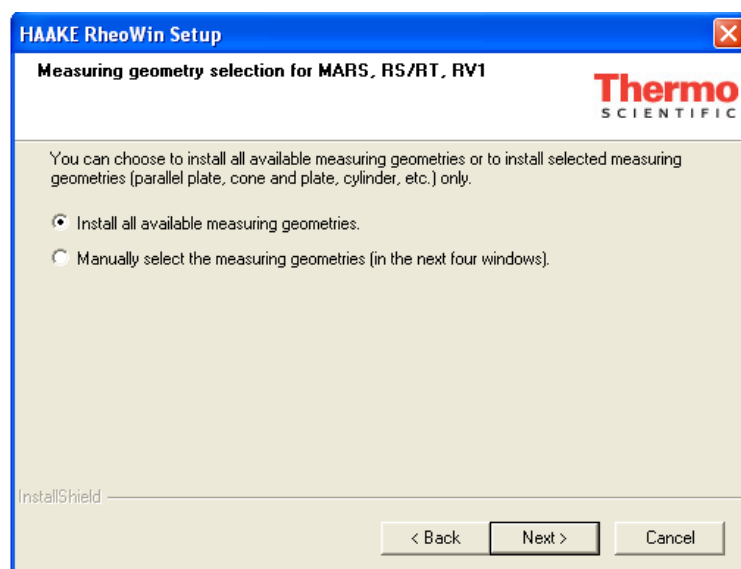
< Back Next > Cancel

It is recommended to use the default setting **C:\Program Files\Thermo\RheoWin**. Please note that the actual default directory depends on the operating system version, see the appendix.

Dialog measuring geometry selection

This dialog provides the option to **Install all available measuring geometries** or to **Manually select the measuring geometries** that will be installed (in the next four windows). It is recommended to use the **Manual select...** option, that is to only install the measuring geometries that are actually used in conjunction with the rheometer. It is always possible to remove measuring geometries from the list (in the RheoWin DeviceManager) at a later point of time.

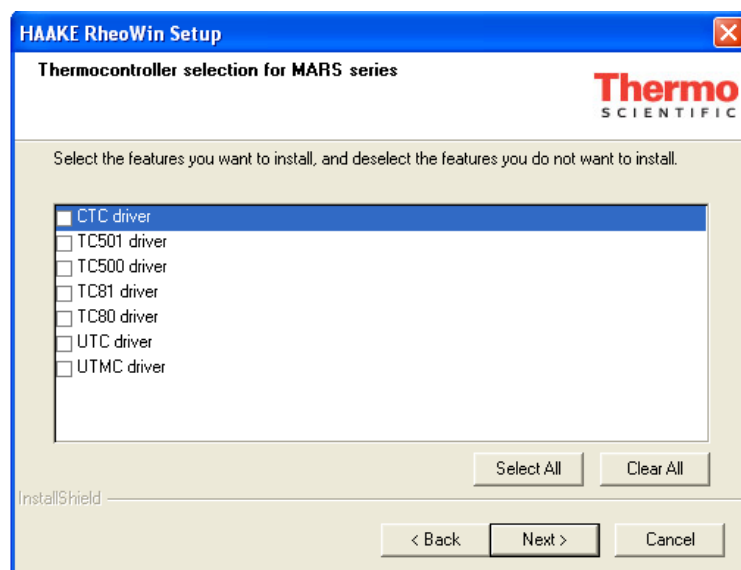
Figure 13. Measuring geometry selection



Dialog thermocontroller selection

In this dialog the thermocontrollers that are to be used with the rheometer or viscometer can be selected.

Figure 14. Thermocontroller selection

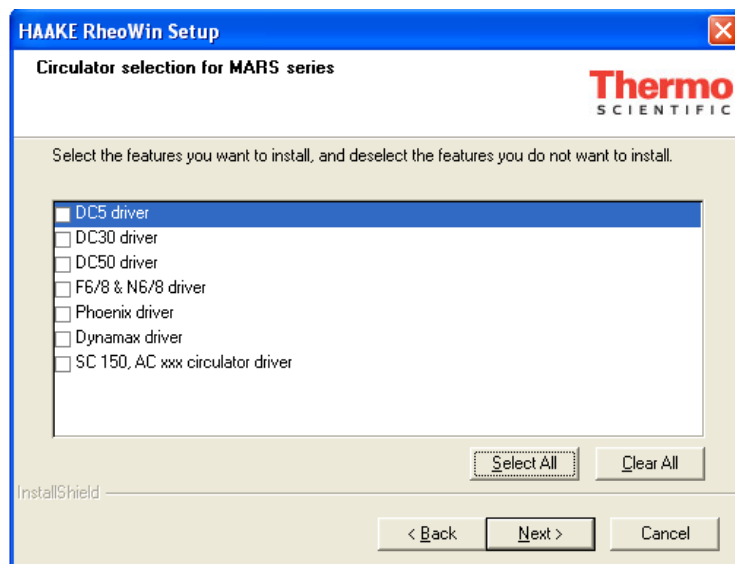


The **Select all** button can be used to select all the thermocontrollers for the installation.

Dialog circulator selection

In this dialog the circulators that are to be used with the rheometer or viscometer can be selected.

Figure 15. Circulator selection

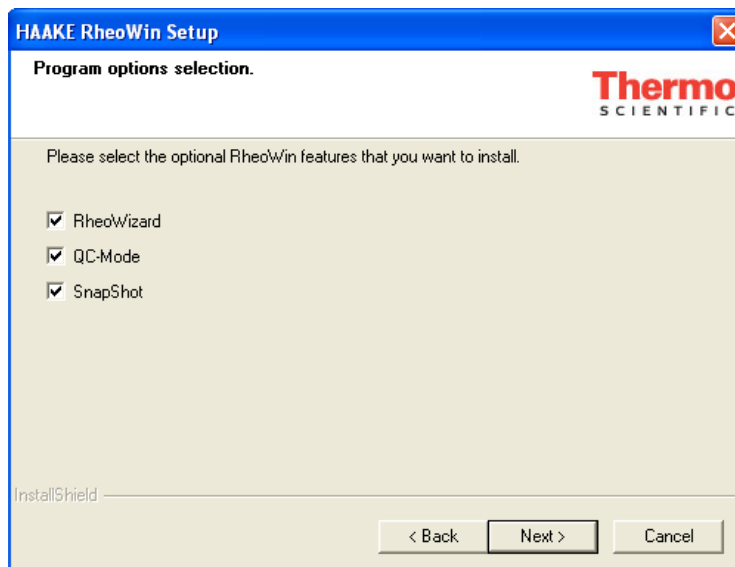


The **Select all** button can be used to select all the circulators for the installation.

Dialog program options selection

Various different program options can be selected in this dialog.

Figure 16. Program options selection

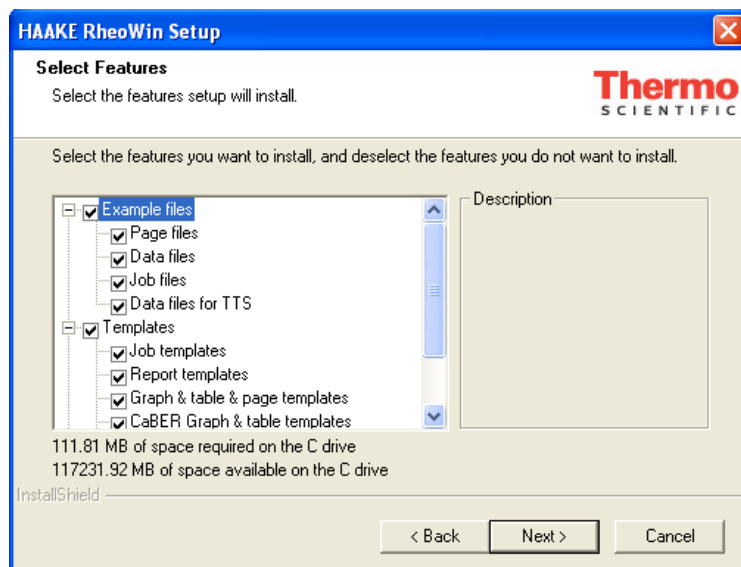


RheoWizard	Intelligent user guidance for creating a job sequence.
QC-Mode	Validation of analysis results.
SnapShot	Quick information on an unknown substance.

Dialog select features

In this dialog it can be selected which templates, sample files and help files will be installed.

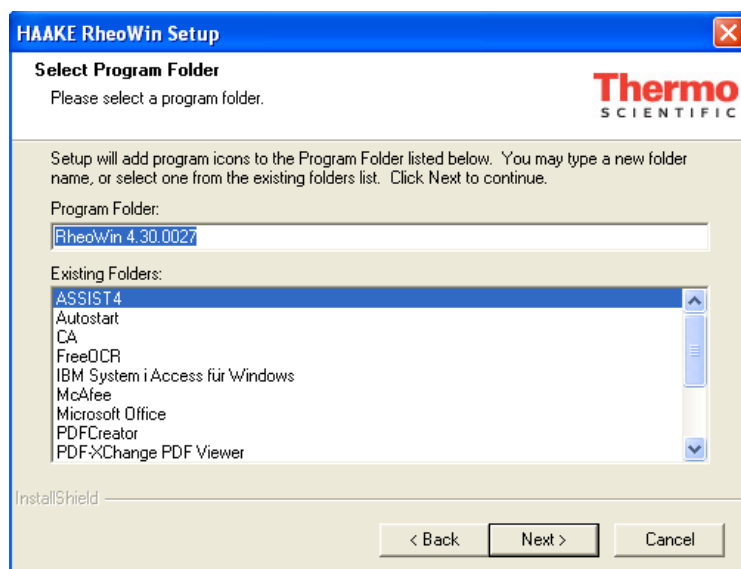
Figure 17. Select features



Dialog select program folder

In this dialog the program folder (in the Windows Start menu) can be selected in which short-cuts to the HAAKE RheoWin programs are to be created.

Figure 18. Select program folder

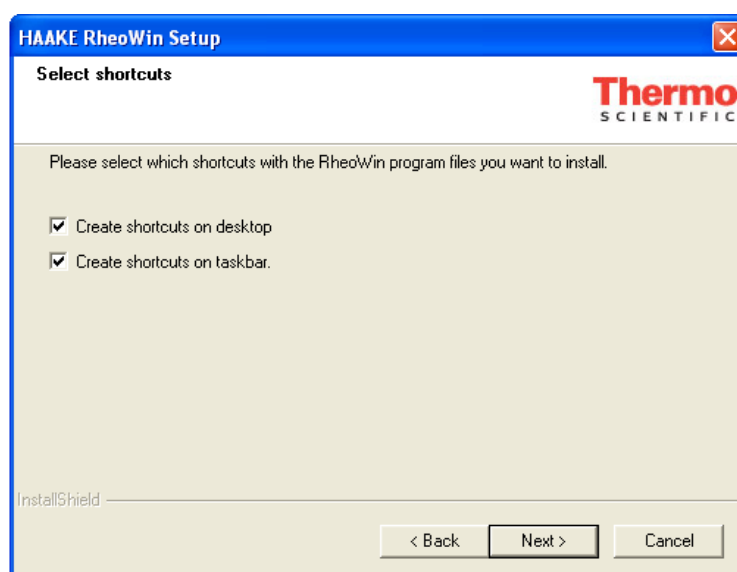


It is recommended to use the default setting RheoWin.

Dialog select shortcuts

In this dialog it can be selected whether program shortcuts to the RheoWin programs should be created on the desktop and/or on the taskbar of the PC.

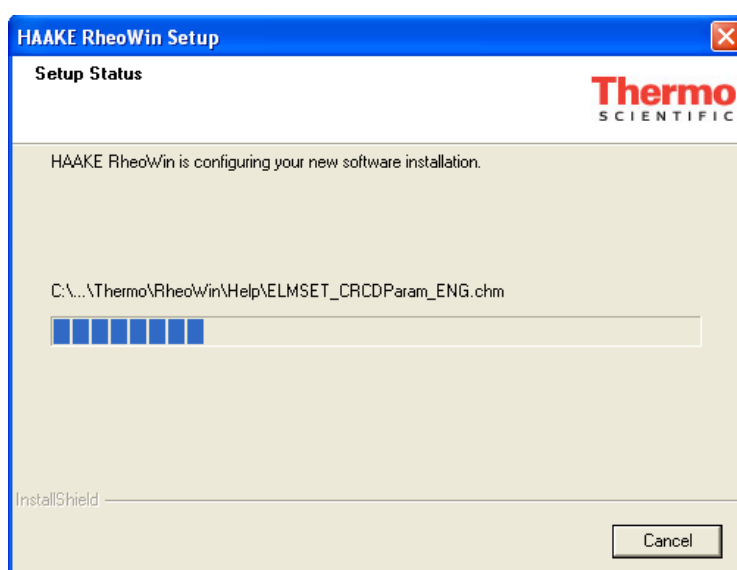
Figure 19. Select shortcuts



Dialog setup status

The actual installation will now be started. Relatively long waiting times can arise, depending on the computer configuration and the operating system.

Figure 20. Setup status



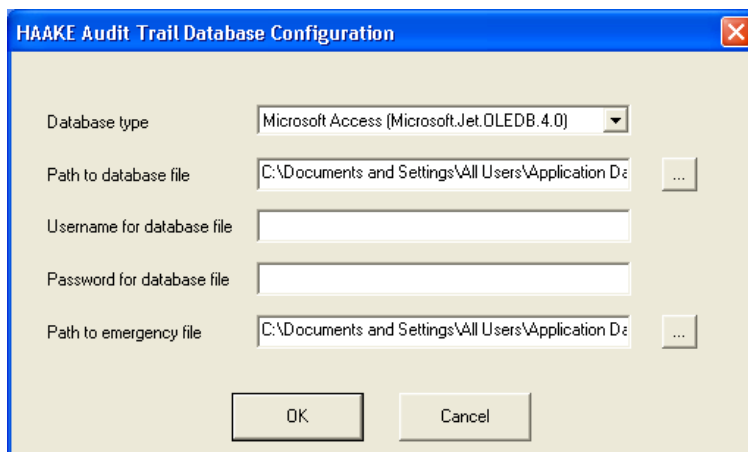
Dialog HAAKE Audit Trail Database Configuration

This dialog is only displayed when the 21 CFR Part 11 tools are being installed. In the dialog certain settings for the Audit Trail Database can be defined.

2 Installation

Adding devices or software modules to an existing installation

Figure 21. HAAKE Audit Trail Database Configuration

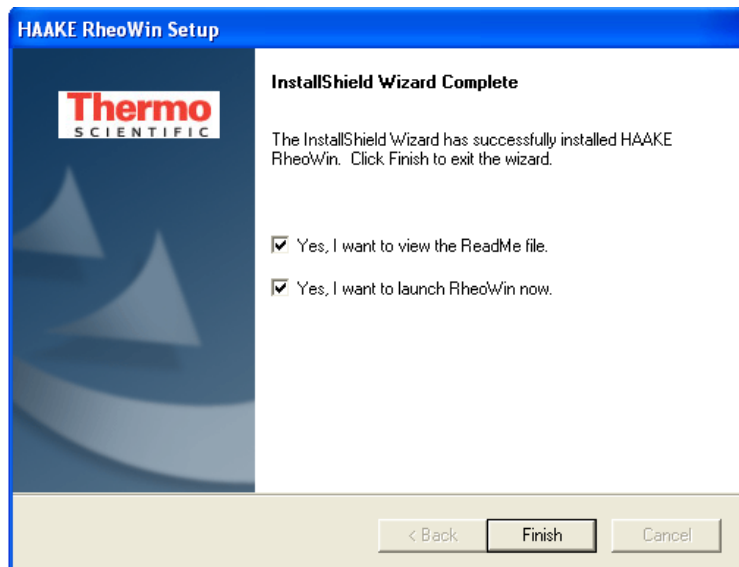
The screenshot shows a Windows-style dialog box titled "HAAKE Audit Trail Database Configuration". It contains five input fields: "Database type" with a dropdown menu showing "Microsoft Access (Microsoft.Jet.OLEDB.4.0)"; "Path to database file" with a text box showing "C:\Documents and Settings\All Users\Application Data" and a browse button "..."; "Username for database file" with an empty text box; "Password for database file" with an empty text box; and "Path to emergency file" with a text box showing "C:\Documents and Settings\All Users\Application Data" and a browse button "...". At the bottom are "OK" and "Cancel" buttons.

IMPORTANT These settings can also be performed after the installation, but it *essential* that these *must* be made prior to the first launch of RheoWin. This in order to meet the requirements regarding of 21 CFR Part 11. For more information on the configuration of the Audit Trail, see [Chapter 4, "Audit Trail."](#)

Dialog installation complete

This dialog provides the option to read the ReadMe file and launch the application after the RheoWin installation is complete. It is strongly recommended to read the ReadMe file.

Figure 22. Installation complete

The screenshot shows a Windows-style dialog box titled "HAAKE RheoWin Setup". On the left is a blue sidebar with the "Thermo SCIENTIFIC" logo. The main area is white and contains the text "InstallShield Wizard Complete" followed by "The InstallShield Wizard has successfully installed HAAKE RheoWin. Click Finish to exit the wizard." Below this are two checked checkboxes: "Yes, I want to view the ReadMe file." and "Yes, I want to launch RheoWin now." At the bottom are "< Back", "Finish", and "Cancel" buttons.

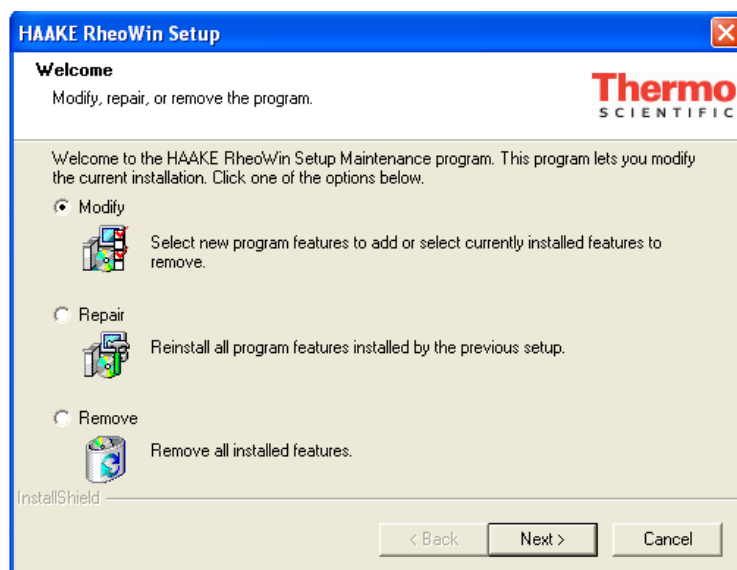
Adding devices or software modules to an existing installation

Additional rheometers/viscometers and/or RheoWin modules can conveniently be added to an existing installation at any later point in time.

For this purpose, the installation is started as described in [„Starting the installation“](#).

After the installation program has started the following dialog is displayed in which the **Modify** option should be selected.

Figure 23. Installation modification



After pressing the **Next >** button, the installation can be performed as described in „[Starting the installation](#)“.

You can either add only (one or more) RheoWin modules or only (one or more) rheometers / viscometers or a combination of both.

IMPORTANT When the 21 CFR Part 11 tools are being added to an existing installation where the HAAKE User Management System was not been enabled yet, the User Management System must be activated manually. See “[Administration](#)” on [page 34](#) in the chapter User management.

First program launch after new installation

The RheoWin Job Manager, Data Manager or User Manager can be started via the shortcuts in the start menu of the operating system, on the desktop or on the taskbar.

Standard installation (without 21 CFR Part 11 tools)

If the program has been installed without the optional 21 CFR part 11 tools, the programs will start without the user having to log in to RheoWin. All program parts and menu entries are accessible. The default account is enabled on the **Administration** page of the RheoWin User Management System, so no log-in is necessary.

If a user access control system is required for RheoWin, this option can be selected in the main menu under **Configuration** by using the **User Manager** command, followed by the User Administration link.

For this purpose, the **Default** Account must be disabled on the **Administration** page of the **User management** dialog. The RheoWin User Management System is described in detail in [Chapter 3](#).

Installation with 21 CFR Part 11 tools

IMPORTANT Before RheoWin is launched for the first time, the Audit Trail **MUST** be configured to meet the 21 CFR Part 11 requirements see [Chapter 4, “Audit Trail.”](#) In case the Audit Trail has not already been configured during the installation, this step *must* be performed at this stage.

In case RheoWin was installed with the optional 21 CFR Part 11 module, a dialog is displayed once upon the first launch of the Job, Data, or User Manager in which the administrator *must* enter (define) the password for administrator access.

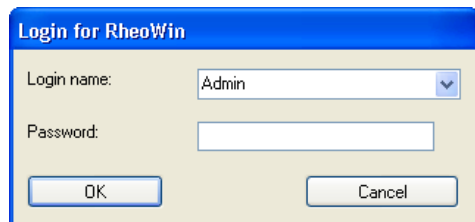
Figure 24. Enter administrator password



To meet the requirements of 21 CFR Part 11, a secure password *must* be set and entered here by the administrator. The entry must be repeated in order to confirm the password.

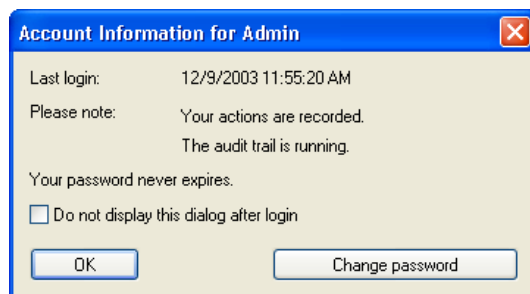
When this step is completed, the RheoWin login dialog is displayed. Here the administrator password that was previously defined must be entered.

Figure 25. Login for RheoWin



When the administrator password has been entered, the account information is shown regarding the current access.

Figure 26. Account information for Administrator



The RheoWin JobManager, DataManager or UserManager program is now launched with the *restricted* privileges of a RheoWin administrator.

Note Many of the menu and dialog items in the JobManager and DataManager are *not* accessible, since by default, a RheoWin administrator is only granted the privileges necessary to configure RheoWin and the 21 CFR Part 11 tools. See “Users” on [page 27](#) for more information.

Settings for 21 CFR Part 11

The following list shows the settings that either have to be performed prior to the first launch of RheoWin or otherwise immediately after the first start of the RheoWin software.

Audit Trail

IMPORTANT Before RheoWin is launched for the first time, the Audit Trail must be configured to meet the 21 CFR Part 11 requirements.

The configuration of the Audit Trail is described in detail in [Chapter 4, “Audit Trail.”](#)

User management

The administrator has to assign access rights to those users who are to be granted access to the RheoWin software by using the User Management System.

The User Management System can be launched as a separate application directly from the Windows desktop or the Windows **Start Menu** or via the **Configuration** menu of the RheoWin Job or Data Manager, respectively.

Each user can be allocated group rights or individual rights for access to and the operation of the RheoWin software. New groups with specific rights can be created at any time.

When the “21 CFR Part 11” tools are being added to an existing installation where the RheoWin User Management System has not been enabled, the User Management System must be activated manually. In case the “21 CFR Part 11” tools are installed in the course of the RheoWin installation, the User Management System will be enabled automatically.

The configuration of the User Management System is described in detail in [Chapter 3, “User management system.”](#)

Signatures and storage settings

The RheoWin administrator must make the desired settings regarding signatures and special options for saving in order to ensure that the installation meets the 21 CFR Part 11 requirements.

The configuration of signatures and storage settings is described in detail in [Chapter 5, “Signatures and security settings.”](#)

User settings for Job and Data Manager

All settings (that can be) made in the **Configuration** menu by using the **Language**, **Units** and **Settings** commands are stored individually for each RheoWin user.

2 Installation

Installation of new RheoWin version

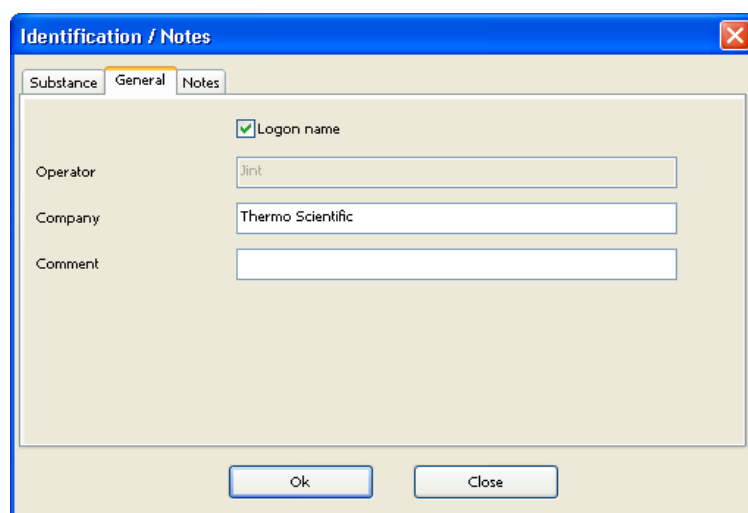
If a user is not to be given the ability to change any of these settings, this can be specified via the assignment of appropriate privileges in the User Administration (siehe [Chapter 3](#)). The settings for a user must, however, be defined in the RheoWin software prior to disabling these privileges for this user.

To this end, the RheoWin software is launched using the access of the respective user to make the appropriate settings. After completion of this step, the software application has to be closed again. The RheoWin administrator then has to disable the relevant privileges for the settings regarding this user in the User Management System.

Job settings

If the user logged into the RheoWin software is to be entered automatically as the operator whenever a job is started, the **Logon name** check box must be enabled on the **General** page of the **Identification / Notes** dialog. Thus, when a job is started, the currently logged-in user will be entered as the operator, even if another user is displayed in the definition of the job.

Figure 27. Identification automatic operator name



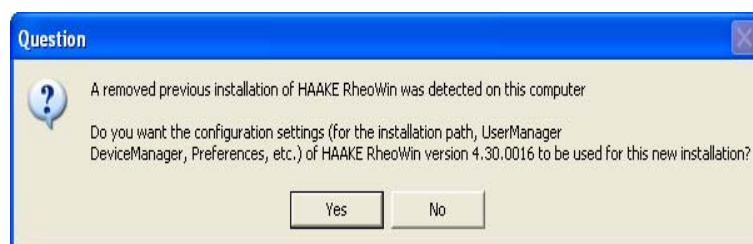
Installation of new RheoWin version

If an (older) RheoWin version is already installed on a PC, the latter must first be removed (deinstalled) according to the instructions in „[Deinstallation of RheoWin](#)“ before a new version can be installed.

All user settings are saved during deinstallation (except for the settings regarding physical units).

In the course of the installation of the new version, the user is then asked whether she/he wants to migrate the stored settings of the previous version to the new installation (after entering the registration key).

Figure 28. Previous installation found



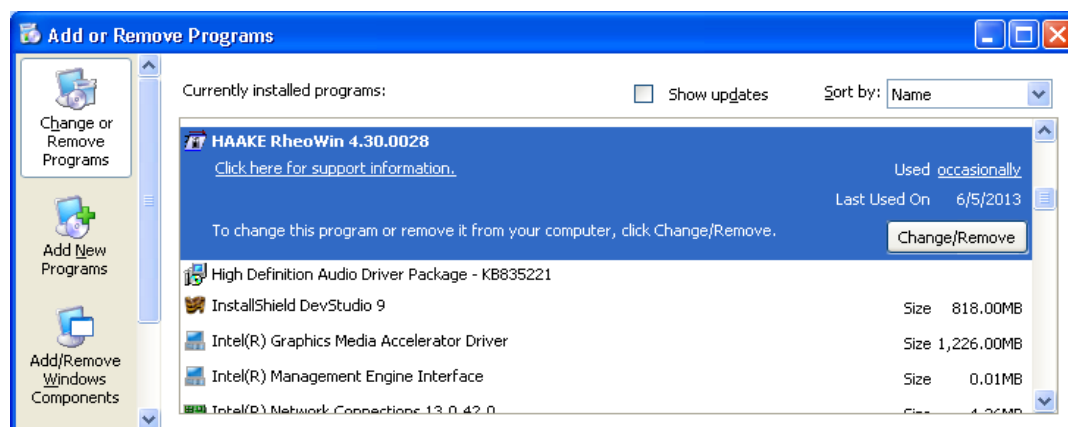
The rest of the installation process is the same as in the case of an initial installation, see „Starting the installation“.

Deinstallation of RheoWin

The RheoWin (de-)installation program can be started from the Windows Control Panel. In order to do so first click on the Windows **Start** button of the Windows taskbar and then choose the **Control Panel** option in the Windows **Start Menu**. In the Windows **Control Panel** then click on the **Programs** button before selecting the **Programs and Features** option.

In the list of installed software programs you can now select the entry HAAKE RheoWin. The RheoWin (de-)installation program is started by clicking the **Change/Remove** button.

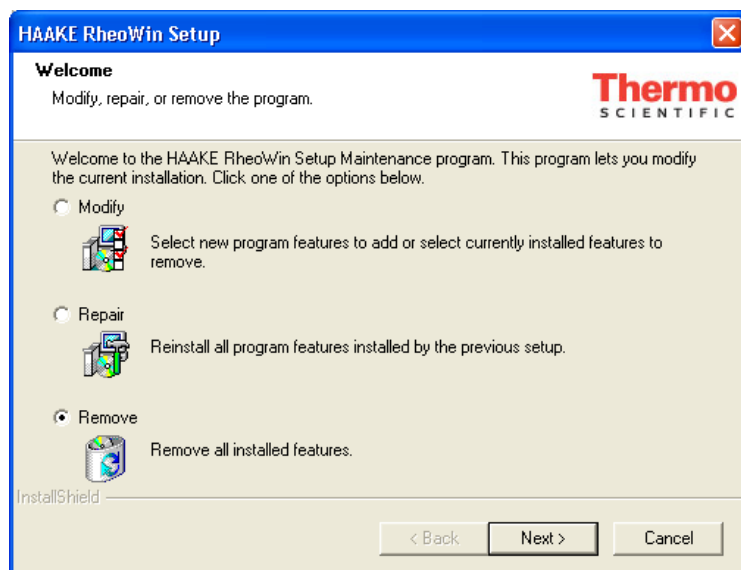
Figure 29. Deinstallation



The RheoWin (de-)installation program can also be launched by using the **Modify or Uninstall RheoWin 4.xx.xxxx** shortcut in the **RheoWin 4.xx.xxxx** program folder of the Windows Start menu that is created during installation.

When the RheoWin (de-)installation program is started, the following dialog is displayed in which the **Remove program** option must be selected.

Figure 30. Remove program



After pressing the **Next >** button and confirming the prompt whether you really want to remove the RheoWin application, RheoWin is deinstalled.

When the software is uninstalled, all RheoWin registry key entries are deleted completely.

All files that were installed by the RheoWin installer are removed again during the deinstallation process.

Only those files are not removed that were created (by users) *after* the installation of RheoWin. This, amongst others, concerns templates, measurement data files, etc. The latter must be deleted manually, if required. In this respect it should, by all means, be ensured that no jobs, data, etc. are deleted that are still required.

User management system

The HAAKE User Management System allows for the implementation of an user access control mechanism for RheoWin.

The entire management of users, user privileges, passwords, password rules, etc. is handled by a separate program (UserManCfg. exe) which is integral part of every RheoWin installation.

The User Management System can either be launched as a separate application directly from the Windows desktop or the Windows Start Menu or from the Configuration menu of the RheoWin JobManager and the RheoWin DataManager.

All settings that are made in the User Management System are stored in a MS Access database file. This database file is password protected and therefore not accessible for Windows users. This means that only the RheoWin program has access to this database file. The ADO driver, etc., that RheoWin needs in order to access this database are installed automatically. The Microsoft Access application is not required.

When the 21 CFR Part 11 tools were installed as part of the RheoWin installation, the user access control is activated automatically, this because 21 CFR Part 11 strictly requires the use of an user access control mechanism.

Note For a standard RheoWin installation (i.e. without the 21 CFR part 11 tools), the user access control can be activated at any time when needed.

Enabling user access control

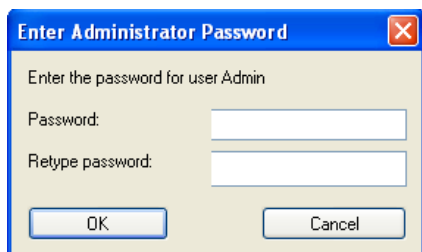
The user access control is automatically activated in case of a RheoWin installation with the 21 CFR part tools. For a standard RheoWin installation the user access control is not activated.

Standard installation (without 21 CFR Part 11 tools)

For a standard RheoWin installation the user access control can be activated at any time as required. To this end, the User Account Management System is either launched directly or from the JobManager or DataManager.

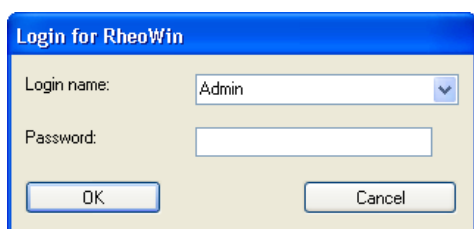
Upon the initial launch of the User Administration System a password must be defined for the build-in Admin (Administrator) user account. The password must be entered twice to confirm it.

Figure 31. Defining the Admin user account password



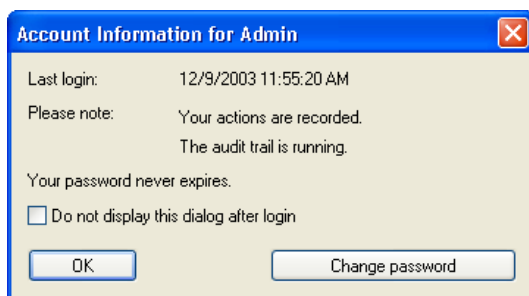
When this step is completed, the RheoWin login dialog will be displayed for the first time. In this dialog the password that was previously defined for the Admin user account must be entered in order to gain access to the User Management System.

Figure 32. RheoWin login



After entering the password for the (Admin) user, the Account information for [user] dialog will display some basic information on this user account.

Figure 33. Account information for the (Admin) user



After clicking the OK button the User Account Management System is launched and can be configured as described in „[User account management system settings](#)“.

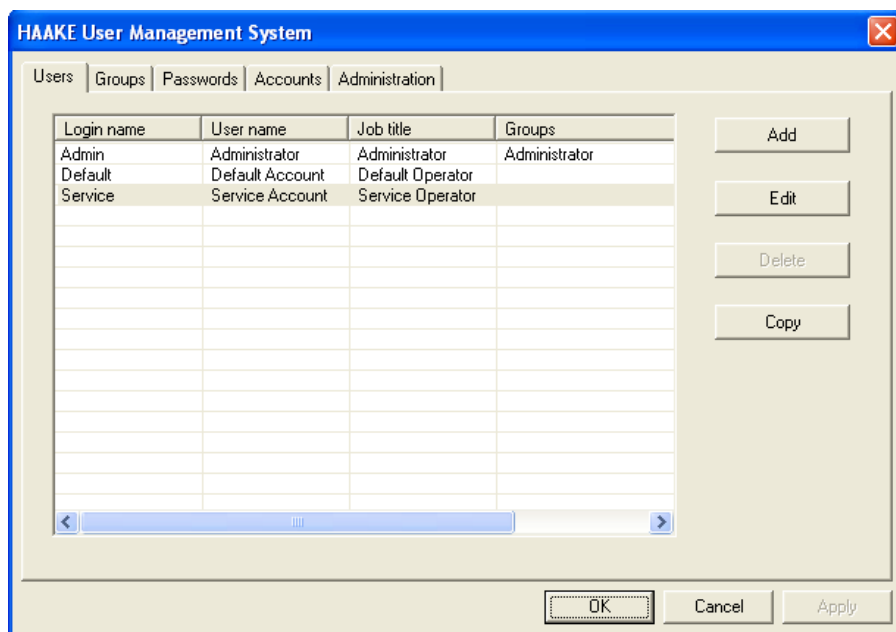
Installation with 21 CFR Part 11 tools

In case the 21 CFR Part 11 tools are installed as part of the RheoWin installation, the user account control is activated automatically and opened upon the initial launch of RheoWin (see 2.6.2.), this because 21 CFR Part 11 strictly requires the use of user access control mechanism.

User account management system settings

After launching the User Management System the dialog in Fig. xx is displayed.

Figure 34. User Management System; Users



The functionality of the five pages of this dialog is described in the following chapters.

Users

On the **Users** page a list of the currently defined users is displayed. The users **Admin**, **Default** and **Service** are predefined and can not be deleted.

The user **Admin** is a predefined (except for its password) user, with administrator privileges, who

- can create, copy, modify and delete user accounts,
- can grant privileges to and withdraw privileges from users,
- can activate and deactivate user accounts,
- by default only has those (very restricted) privileges in RheoWin that are required to manage the application and user accounts. By default the **Admin** user can not, for example, create, modify or execute jobs or load data files. This in contrast to a Windows administrator user who normally has all privileges.

The **Admin** user account can neither be locked nor deactivated or deleted. However, the **Admin** user can, of course, change its own privileges as required.

The **Default** user is a "dummy" user whose account can be activated on the Administration page of the User Account Management System dialog. When the **Default** user account is active, the RheoWin login dialog is not displayed at program start-up. This means that an user login is not possible and that each person who has access to the PC on which RheoWin is installed can use RheoWin with the privileges that have been set for the **Default** user account. These privileges can be restricted by the RheoWin **Admin** user or any other user with the proper administrative privileges. By default, as part of a standard installation the **Default** user is granted all privileges.

The Service user currently does not have any function and *can not* be used (this includes the use by any ThermoScientific personnel).

The number of user accounts that can be setup is only limited by the maximum size of the database file in which all the User Account Management System settings are stored. For the maximum database file size of 2 Gb, thousand user accounts are not a problem.

Adding, editing, deleting and copying users

After clicking on the Edit, Add or Copy button, a dialog is displayed where the properties, status, privileges, etc., of a (new) user can be entered and edited.

Figure 35. Adding a user

On the **Account** page of the **Add user**, **Edit user** and **Copy user** dialog the following edit fields, options and status indicators are provided:

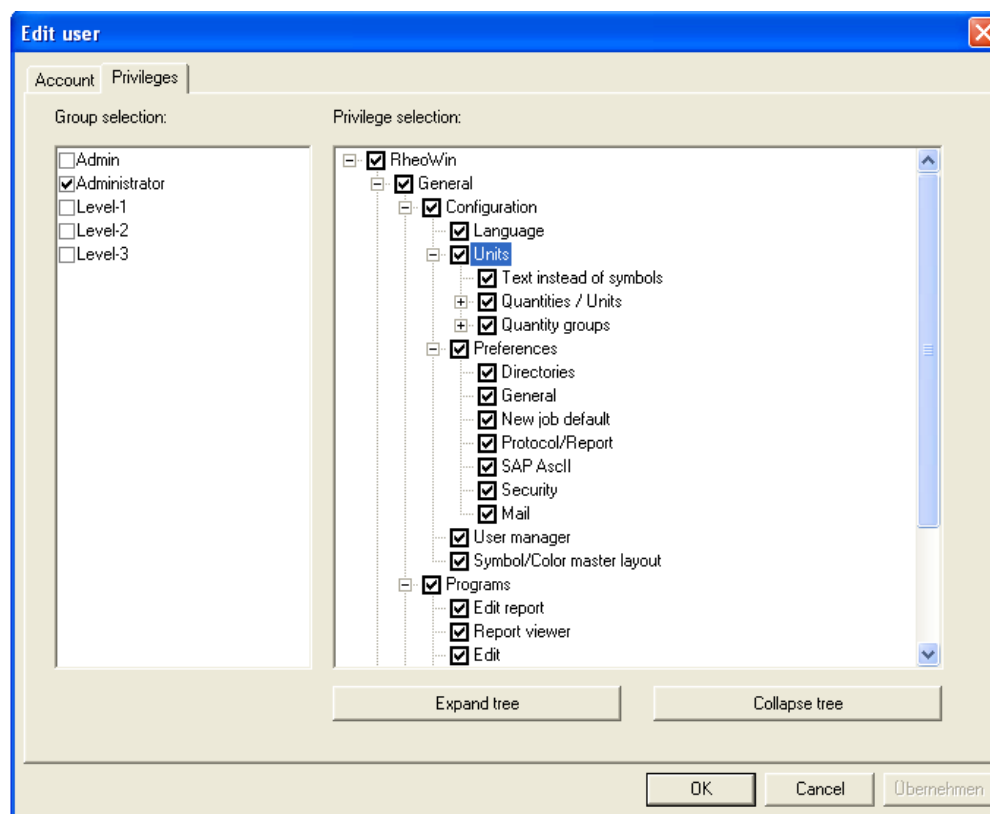
- Edit fields
 - **User name**
When the 21 CFR Part 11 tools are installed, a user ID, normally consisting of the first and last name of the user, *must* be entered for each user.
In case of a standard RheoWin installation, the user ID can be left blank, if required.
 - **Job title**
A job description can be entered in this field. This field can be left blank.
 - **Loginname**
A login name *must* be defined for each user. Without a login name, a user cannot log in to RheoWin. The login name is not case-sensitive: “Smith” is the same as “SMITH” or “smith”.

- **Password**
A password *must* be set for each user in case the 21 CFR Part 11 tools are installed. The password is case-sensitive: For example, "Password" is *not* the same as "password". The password must conform to the rules defined on the **Passwords** page of the **HAAKE User Management System** dialog.
In case of standard RheoWin installation the password can be left blank, if required.
- **Confirm password**
The password must be entered a second time in this field in order to confirm it.
- Options
 - **User must change password at next log-in**
This option *must* be enabled when the 21 CFR Part 11 tools are installed. In a standard RheoWin installation, this option should be enabled. The reason for this is that the password (for the initial login) is normally assigned by and communicated to the user by the RheoWin administrator. As the administrator, however, must not know the password of an user, the user must change her/his password at the next login into the application.
 - **User cannot change password**
This option *must* be *disabled* when the 21 CFR Part 11 tools are installed. Every user must be able to regularly change her/his password. This is required by the password rules.
In case of a standard RheoWin installation this option can be set as required.
 - **Password never expires**
This option *must* be *disabled* if the 21 CFR Part 11 tools are installed. Every user must regularly change her/his password. This is required by the password rules.
In case of a standard RheoWin installation this option can be set as required.
 - **User can manage user accounts**
This option *must* be *disabled* for all users except for the RheoWin administrators when the 21 CFR Part 11 tools are installed.
In case of a standard RheoWin installation it is recommended to set this options to *disabled*.
 - **Account locked**
With this option the account of a user can be locked or unlocked (by a RheoWin administrator).
- Status display
 - **Login errors**
All errors recorded during login attempts are shown in this status display. A login error will result, for example, when a user does not enter his/her password correctly.
The list of display errors can be deleted by clicking the **Reset** button.
 - **Login time**
In this status display the users last login and logout date/time are shown.
These values can be deleted by clicking the **Reset** button.

Defining user privileges

On the **Privileges** page of the **Add user**, **Edit user** and **Copy user** dialog, specific privileges (or rights) can be granted to each RheoWin user individually.

Figure 36. User privileges



The privileges are displayed in the form of a hierarchical "tree" structure, in the **Privilege selection** box, on the right hand side of the dialog.

The individual privileges that are assigned to a user are marked by the ☒ symbol, those that were not assigned are indicated by the ☐ symbol.

By clicking on a ☒ or ☐ symbol in front of a privilege the assignment of single privilege or all the privileges contained in a branch of the tree can be changed.

By clicking on the **Expand tree** or **Collapse tree** button, all branches of the tree that are hierarchically below the marked position are expanded or collapsed, respectively.

To simplify the allocation of an identical set of privileges to multiple users, privileges groups may be used, see ["Groups."](#)

All available groups are displayed in the **Group selection** list on the left hand side of the dialog.

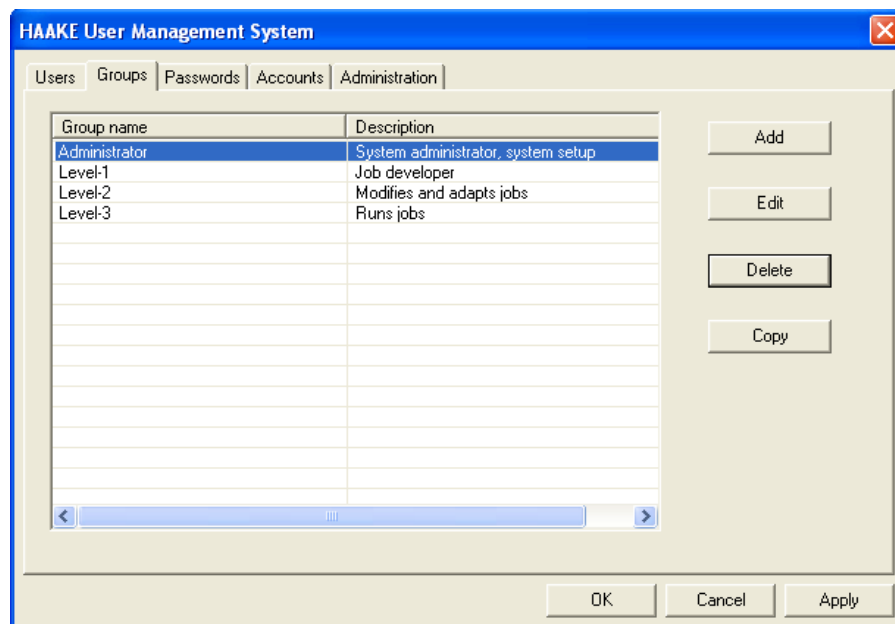
When an individual privilege (right) is withdrawn from a user that had been granted to that user through membership of a group, that user ceases to be a member of the group. However, all other privileges (rights) - including those of the now restricted group - are retained.

Groups

To simplify the creation of (many similar) user accounts, the RheoWin administrator can define **Groups** with a certain set of privileges (rights) and then assign a certain group to an user.

The four groups **Administrator**, **Level-1**, **Level-2** und **Level-3** are predefined and part of the RheoWin installation. It is recommended to rename the cryptic (but neutral) group names **Level 1**, etc., as required.

Figure 37. User Management System; Groups



The four predefined groups have been designed as follows:

- **Administrator**
A user of this group only has the typical administrator privileges that are needed to administer RheoWin. An administrator can setup users, default directories and other basic program settings. An administrator can *not* create, modify, delete and execute jobs, *nor* create, modify and delete templates *nor* evaluate data, etc. That means, an administrator is not supposed to actually use RheoWin in combination with the rheometer/viscometer for which the software is installed.
- **Level-1**
A user of this group has almost all privileges available except for the typical administrator privileges. He can make device settings, create, modify, delete and execute jobs, create, modify and delete templates and evaluate data, etc.
- **Level-2**
A user of this group has the necessary privileges to modify and execute existing jobs, to evaluate data, etc., but he can not create new jobs.
- **Level-3**
A user of this group can (only) execute predefined jobs and evaluate data, etc.

Depending on the specific requirements in a company the properties of the predefined groups can and should be modified.

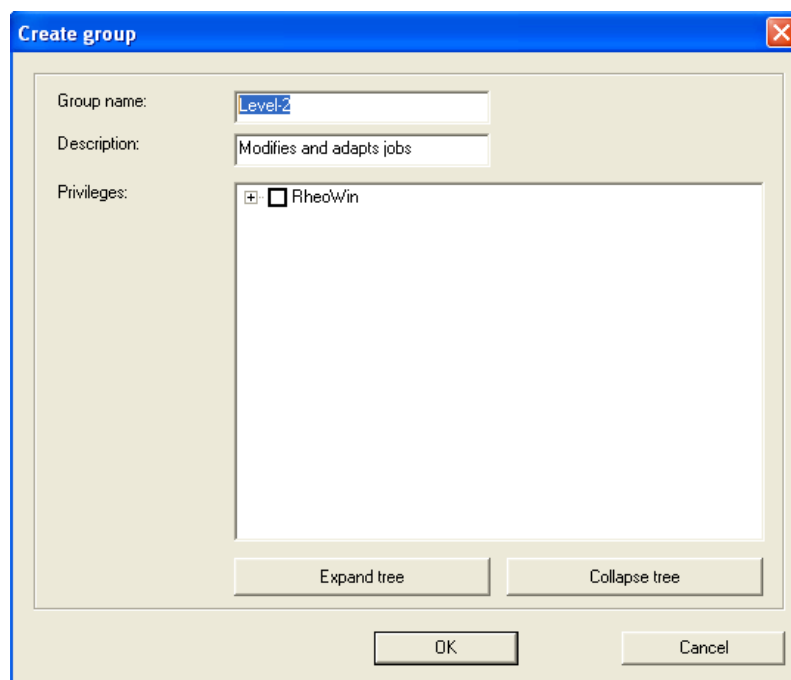
The effective privileges of a user result from the combination of the privileges of all groups to which she belongs and her individual privileges.

In case a single privilege is withdrawn from a user that had previously been granted to him through membership of a group, this user ceases to be a member of this group. However, all his other privileges - including those of the now restricted group - are retained.

The number of groups that can be setup is only limited by the maximum size of the database file in which all the User Account Management System settings are stored. For the maximum database file size of 2 Gb, thousand groups are not a problem.

By clicking on the **Edit**, **Add** or **Copy** button, a dialog is displayed in which the properties of a group can be viewed and edited.

Figure 38. Editing a group



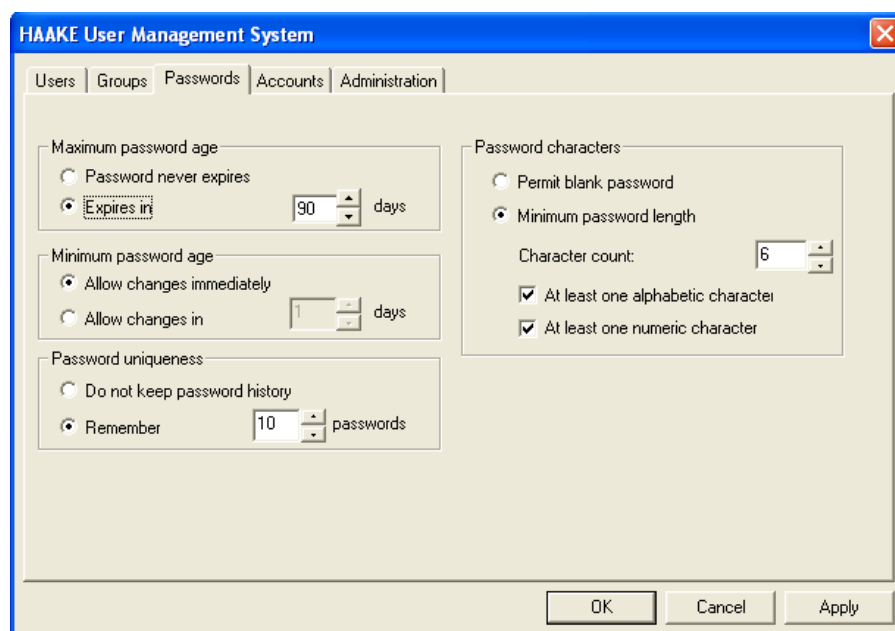
The functionality and the content of the privileges tree is identical to that of the **Edit users** dialog, see „[Defining user privileges](#)“. In addition to the **Group name**, which must be defined, a **Description** of the group can be entered.

Passwords

When the 21 CFR Part 11 tools are installed, each user *must* have a login password. These passwords *must* conform to certain rules according to 11 CFR Part 21. These rules *must* be defined on the **Password** page of the **HAAKE User Management System** dialog (once).

In case of a standard RheoWin installation (i.e. without 21 CFR Part 11 tools), passwords and the rules for passwords can be used. However, this is not mandatory in this case.

Figure 39. User Management System; Passwords



On the **Passwords** page the following password rules can be defined:

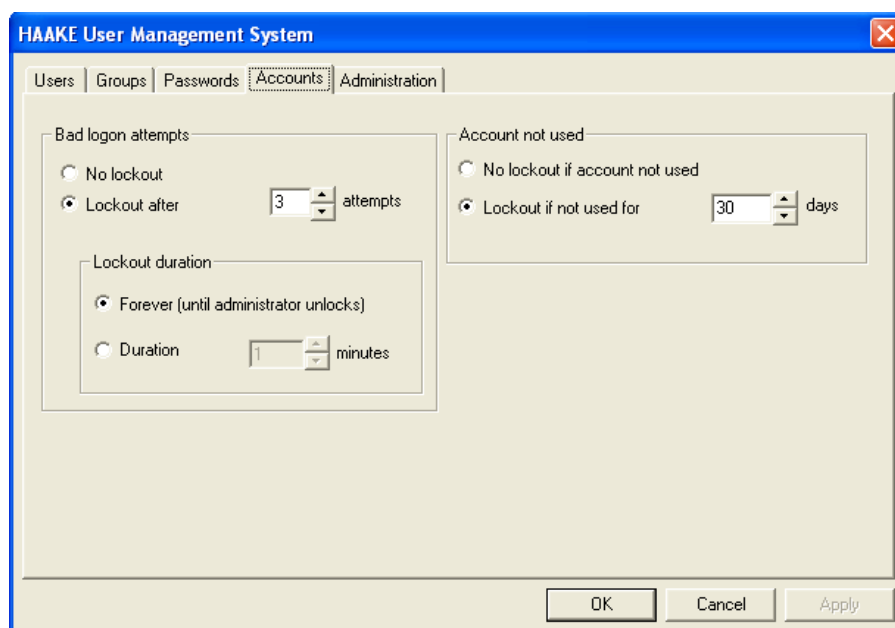
- Maximum password age**
 When the 21 CFR Part 11 tools are installed the option **Expires in** *must* be enabled . This means that the option **Password never expires** must not be enabled. The specified number of days may vary depending on the company, **90 days** is a commonly used value.
- Minimum password age**
 This option determines how often the password can be changed. This setting can be adjusted as required.
- Password uniqueness**
 When the 21 CFR Part 11 tools are installed the option **Save n passwords** *must* be enabled . This means that the option **Do not save passwords** must not be enabled. When the option **Save n passwords** is enabled, the first password can be used again after n other passwords. The value of n = 10 is a commonly used value.
- Password characters**
 When the 21 CFR Part 11 tools are installed the option **Minimum password length** *must* be enabled . This means that the option **Blank password allowed** must not be enabled. A value of 6 is commonly used for the minimum **Character count**. In order to ensure that passwords have a certain level of complexity, it is also possible to require that a password contains **At least one alphabetic character** and/or **At least one numeric character** by activating the corresponding option.

Accounts

When the 21 CFR Part 11 tools are installed certain logon rules must be defined . These rules *must* be defined on the **Accounts** page of the **HAAKE User Management System** dialog (once).

In case of a standard RheoWin installation (i.e. without 21 CFR Part 11 tools), the logon rules can be used, but this is not mandatory in this case.

Figure 40. User Management System; Accounts



On the **Accounts** page, the following logon rules can be defined:

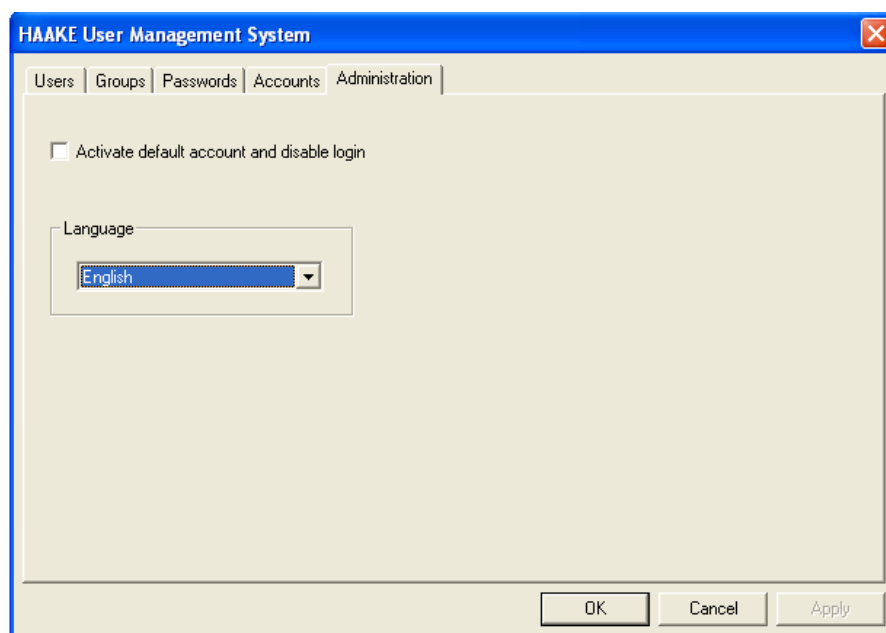
- **Bad logon attempts**
When the 21 CFR Part 11 tools are installed the option **Lock after n attempts** *must* be enabled. The option **No lockout** must not be enabled. A common value for the maximum allowed number of invalid logon attempts is $n = 3$.
- **Lockout duration**
This option can be used to define whether a lockout due to failed logon attempts remains in effect until a RheoWin administrator unlocks the account or whether the lockout will only be active for a certain period of time. This time can be specified in the **Duration** input field.
- **Account not used**
This setting determines whether a user account is automatically locked after not being used for n days. The account can only be unlocked by a RheoWin administrator.

Administration

When the 21 CFR Part 11 tool are installed the option **Activate default account and disable logon** *must* stay deactivated.

In a standard RheoWin installation (i.e. without 21 CFR Part 11 tools), the option **Activate default account and disable logon** is always enabled. This means that the logon dialog will not be displayed when launching the RheoWin Job Manager or Data Manager. Any person who has access to the PC on which RheoWin is installed can use RheoWin with the privileges that have been set for the Default user account. If no changes have been made to the Default user account privileges, there are no restrictions.

Figure 41. User Management System; Administration



In the **Language** box, the dialog language can be set for the **HAAKE User Management System** dialog in the event that the User Administration was started as a separate program either directly from the Windows desktop or via the Windows Start menu.

When the **HAAKE User Management System** was launched via the **Configuration** menu of the RheoWin JobManager or DataManager, the language selection option will be locked and the same language as in the JobManager and DataManager will be used automatically.

Audit Trail

The Audit Trail is part of the 21 CFR Part 11 tools and will *only* be installed if the 21 CFR Part 11 tools are installed. In this case, the Audit Trail will automatically be activated immediately upon initial launch of RheoWin via the Job Manager, Data Manager or User Manager. The installation of RheoWin is also logged in the Audit Trail. The Audit Trail *cannot be disabled*.

Note In a standard RheoWin installation (i.e. without 21 CFR Part 11 tools), the Audit Trail tool is not installed and can, therefore, never be activated.

General information

The Audit Trail records all actions that a user performs on a measurement definition (i.e. a *.rwj job file), a (*.rwd) data file, etc. or any another parameter which is relevant for the data acquisition.

Logged actions are, for example, the opening, editing and saving of a measurement definition as well as each log-in and log-out of a user to or from the RheoWin Job Manager, Data Manager and User Manager (but not the operating system!) as well as the start of a measurement (job). When modifications are made to a measurement definition (job file), the changes regarding all relevant parameters are only logged when the measurement definition (*.rwj job file) is subsequently saved. Temporary changes are not saved, because jobs that are not saved cannot be executed.

The events to be logged are (strictly) defined in RheoWin itself. The Audit Trail tool only provides the functionality necessary to record all changes in a database.

In the event that the Audit Trail database can not be accessed (for example due to the interruption of a network connection to the Audit Trail database file), the logged data is stored in a temporary log file on the local PC. When the contact to the Audit Trail database is re-established, the information contained in temporarily stored log file is transferred to the Audit Trail database and then deleted. Every single set in the temporary log file contains a separate checksum, so that potential manipulations can be detected and marked as such in the database.

An empty Audit Trail database file in Microsoft Access format is part of the installation and can be used immediately afterwards without any further action required.

To use a SQL database, the user must have installed the appropriate client on her/his computer. For this purpose, the SQL server must be of version 6.5 or higher.

The Audit Trail module only checks and uses the installed ADO driver (MS Jet 4.0 or MS SQL client), i.e. it does not work with ODBC drivers.

Configuration

The configuration dialog for the Audit Trail database is automatically displayed at the end of the RheoWin installation (see Section 2.4), which makes the configuration process fast and easy. The configuration must be performed by a Windows system administrator.

In case the configuration is not possible as an integral part of the installation or when changes to the configuration are necessary at a later point in time, an authorized user can start the configuration program **AuditTrailCfg.exe** separately. The program is stored in the main RheoWin program directory (default directory **C:\Program Files\Thermo\RheoWin**).

The initial configuration of the Audit Trail database *must* be performed prior to the initial launch of RheoWin (Job Manager, Data Manager or User Manager).

The configuration program does not have its own built-in access control. This means that, theoretically, any user who has access to the PC on which RheoWin was installed can start the configuration program and may make undesired modifications. Therefore, it is *mandatory* to restrict access to the configuration program.

It is the responsibility of the customer or the system administrator to restrict the access rights for the Audit Trail configuration program using the tools of the operating system, i.e. to only allow the system administrator, for example, to execute this program.

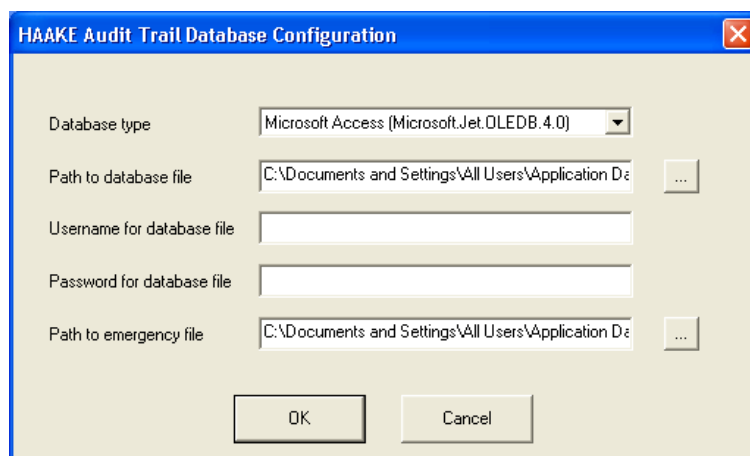
An easy way to restrict access is to completely remove the configuration program from the RheoWin program folder and store it in a safe place (i.e. a place with restricted access).

The dialog automatically detects which drivers are installed on the PC and provides the option to choose between an Access or a SQL database file.

Access database

The Access database file HAAKEAuditTrail.mdb, which is installed in the RheoWin application data directory, see [Installation directories](#), is stored in the MS Access 97 format. It can be converted to the MS Access 2000 or MAS Access 2003 format, if required. The Audit Trail module is compatible with all of these formats. The Audit Trail module is *not* compatible with the MS Access 2007, Access 2011 and Access 2013 formats

Figure 42. HAAKE Audit Trail Database Configuration; MS Access



The following parameters must be set in order to be able to use an Access database:

- **Database type**
In case the supplied Access database is to be used the entry **Microsoft Access (Microsoft.Jet OLEDB.4.0)** must be selected.
- **Path to database file**
The path to the Audit Trail database file must be entered here. By default, the file **HAAKEAuditTrail.mdb** in the **AuditTrail** subdirectory of the RheoWin application data directory (see [Installation directories](#)) is set as the standard path.
The database file does not necessarily need to have the file name HAAKEAuditTrail.mdb, it can be renamed as required.

IMPORTANT For data protection reasons, it is strongly recommended to copy the **HAAKEAuditTrail.mdb** file to a network directory and set the path accordingly by clicking on the [...] button.

- **Username for database file**
This field must be left blank in the case of an Access database. This function is currently not implemented (and also not required).
- **Password for database file**
In order to prevent unauthorized access to the Audit Trail database, for example via Microsoft Access, the database should be protected with a password. The password must be entered in this dialog to ensure that the password is known to RheoWin and that RheoWin is able to access the database file.
The (empty) **HAAKEAuditTrail.mdb** Access database file that is part of the installation contains no password.

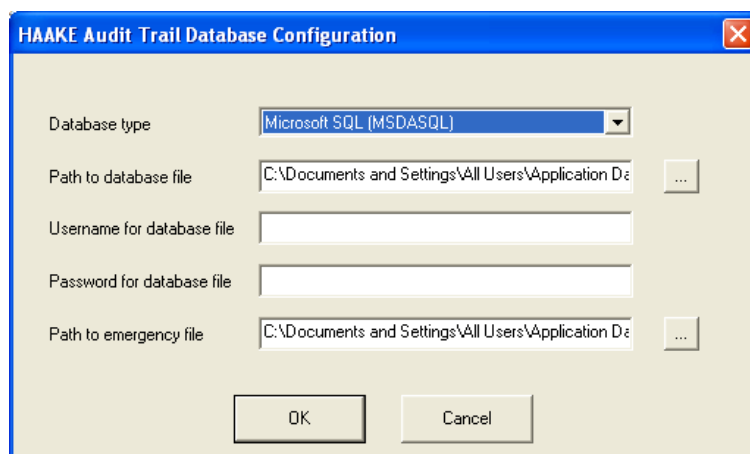
IMPORTANT The password entered is *not* automatically written to the Access database; this needs to be done manually by the system administrator using Microsoft Access (Microsoft Access is not included with RheoWin).

- **Path to Emergency file**
This file is used as a temporary log file in the event of loss of contact to the database file. Once access to the database file is restored, the file is automatically transferred to the database and then deleted.
It is recommended not to change the path to this file or at least to use a local path, i.e. no network path.

SQL database

An SQL database can be used as an alternative to an Access database. If this database already contains a table named "AuditTrail", the latter will be used without any preliminary check. This means that it must comply with the definitions as described in [Database format](#). In case such a table does not yet exist, it will be created automatically.

Figure 43. HAAKE Audit Trail Database Configuration, SQL



The following parameters must be set in case an SQL database is used:

- **Database type**

In case an SQL database is to be used, the corresponding entry must be selected here.

- **Path to database file**

This entry has to consist of a server (IP address or host name) and a database file located at that point, separated by '\'. The [...] button has no function here.

In case the database already contains a table called “AuditTrail”, this will be used without any preliminary check, this means that it has to meet the definition as described in [Database format](#). If such a table does not exist, it will be created automatically.

- **Username for database file**

In case a user name is needed in order to access the SQL database it can be entered in this field.

IMPORTANT The entered user name is *not* automatically written into the SQL database file. This needs to be done manually by the Windows system administrator.

- **Password for database file**

In case a password is needed in order to access the SQL database it can be entered in this field.

IMPORTANT The entered password is *not* automatically written into the SQL database file. This needs to be done manually by the Windows system administrator.

- **Path to Emergency file**

This file is used as a temporary log file in the event of loss of contact to the database file. Once access to the database file is restored, the file is automatically transferred to the database and then deleted.

It is recommended not to change the path to this file or at least to use a local path, i.e. no network path.

Database format

The RheoWin Audit Trail tool supports two database formats: Microsoft Access (the Jet 4.0 engine is installed automatically) and Microsoft SQL (starting from SQL Server 6.5). An empty Access database file with an Audit Trail table as shown in table 2 is supplied and automatically installed. In case an SQL database is used, we recommend to provide the database without an Audit Trail table entry so that the Audit Trail tool can automatically create the correct matching table.

Table 2 shows the AuditTrail table format.

Table 2. Audit Trail table format

Column name	Meaning	Type (Access)	Type (SQL)
_HostID	Name of the logged-in user plus the network name of the computer		char[255]
_TimeOfDay	Date and time of the entry in IEEE-Format (jjjjmmmtt hh:mm:ss)		char[255]
_Application	Name of the program (e.g. „RheoWin JobManager“)		char[255]
_Username	User logged into the application (possibly not the same as _HostID)		char[80]
_Theme	Higher level subject of the action („User Management“, „Job“, ...“)		char[255]
_Activity	Action carried out („Login“, „Logout“, Load“, „Save“, ...)		char[255]
_Filename	Name of the affected file (Job file name, data file name, ...)		text
_P1	Additional parameter 1		text
_P2	Additional parameter 2		text
_Manipulated	*** (in case the data set in the temporary file was manipulated)		char[5]

The following gives a more detailed description of the meaning of the individual columns in the audit trail table:

- **_HostID**
is generated on the basis of the name of the PC on which RheoWin is installed and the respective Windows user currently logged into the system and has the format "User@Computer", such as, for example, "Smith@PC-LABORATORY". Here "Smith" is the name of the user who is logged into Windows (and is not necessarily identical with the user of the application), and "PC-LABORATORY" is the name of the computer in the network.
- **_TimeOfDay**
contains the date of the entry in the IEEE date/time format ("20031103" for November 3rd, 2003) and the time in 24-hour format.
- **_Application**
is the name of the Windows application that generated the entry, i.e. RheoWin Job Manager, RheoWin Data Manager or RheoWin User Administration System.
- **_Username**
is the name of the user logged into RheoWin.
- **_Theme**
is the subject to which the entry belongs ("Job Manager", "Job Run", etc.).

- **_Activity**
is the action carried out („User login“, „Load Job“, „Job Start“, etc.)
- **_Filename**
If a file is involved, its name is specified here. This is the case, for instance, if a job is being loaded or saved, but not when a user is logging in.
- **_P1/_P2**
Depending on the activity, several different parameters can be mentioned. For example the old and the new value of a certain measurement parameter.
- **_Manipulated**
This column ought to be always empty because it indicates manipulated data sets. These can occur when the temporary log file is illegally altered by means of an external editor.

Audit Trail viewer

The Audit Trail database can be displayed at any time in the **HAAKE Audit Trail Viewer**. The Audit Trail Viewer can either be started from the RheoWin Job Manager and RheoWin Data Manager by using the **Audittrail Viewer** command in the **Programs** menu or directly as a separate program named **TrailView.exe**. The **TrailView.exe** is stored in the RheoWin program directory (default directory: **C:\Program Files\Thermo\RheoWin**).

Figure 44. HAAKE Audit Trail Viewer

Time	Application	User	Theme	Activity	File name	Parameter 1	Parameter 2
18.07.2012 17:27:44	HAAKE RheoWi...		User management	User login		User : Admin Successful	
18.07.2012 17:27:46	HAAKE RheoWi...		User management	End			
18.07.2012 17:27:48	HAAKE RheoWi...	Admin	Program	End			
18.07.2012 17:27:51	HAAKE User M...		User management	Start			
18.07.2012 17:27:53	HAAKE User M...		User management	End			
18.07.2012 18:04:20	HAAKE RheoWi...		Program	Start			
18.07.2012 18:04:26	HAAKE RheoWi...		User management	User login		User : Admin Successful	
18.07.2012 18:35:32	HAAKE RheoWi...	Admin	Program	End			
19.07.2012 10:25:57	HAAKE RheoWi...		Program	Start			
19.07.2012 10:26:13	HAAKE RheoWi...	Jint	User management	Login error: ...			
19.07.2012 10:26:23	HAAKE RheoWi...		User management	User login		User : Admin Successful	
19.07.2012 10:26:25	HAAKE RheoWi...	Admin	Window: Page 1	Open file	D:\DATA\3 point bendi...		
19.07.2012 10:28:56	HAAKE RheoWi...	Admin	Window: Page 1	Close page	3 point bending with im...		
19.07.2012 10:28:56	HAAKE RheoWi...	Admin	Program	End			
19.07.2012 10:38:02	HAAKE RheoWi...		Program	Start			
19.07.2012 10:38:06	HAAKE RheoWi...		User management	User login		User : Admin Successful	
19.07.2012 10:38:18	HAAKE RheoWi...	Admin	Device manager	Open			
19.07.2012 10:38:24	HAAKE RheoWi...	Admin	Device manager	Close			
19.07.2012 10:38:28	HAAKE RheoWi...		User management	Start			
19.07.2012 10:38:36	HAAKE RheoWi...		User management	User login		User : Admin Successful	
19.07.2012 10:38:59	HAAKE RheoWi...	Admin	User management	User Jint edited		Password has been changed	
19.07.2012 10:38:59	HAAKE RheoWi...	Admin	User management	User Jint edited		Login errors are deleted	
19.07.2012 10:38:59	HAAKE RheoWi...		User management	End			
19.07.2012 10:39:00	HAAKE RheoWi...	Admin	Program	End			
19.07.2012 10:39:04	HAAKE RheoWi...		Program	Start			
19.07.2012 10:39:14	HAAKE RheoWi...		User management	User login		User : Jint Successful	
19.07.2012 10:39:23	HAAKE RheoWi...	Jint	Device manager	Open			
19.07.2012 10:40:06	HAAKE RheoWi...	Devic...	Edit		Simulator		
19.07.2012 10:40:09	HAAKE RheoWi...	Jint	Device manager	Close			
19.07.2012 10:40:17	HAAKE RheoWi...	Jint	Job	Open	C:\Documents and Sett...		
19.07.2012 10:40:57	HAAKE RheoWi...	Jint	Job	Changes		Element: 0 ID: 0rheometer: (-----) -> Simulator...	
19.07.2012 10:40:57	HAAKE RheoWi...	Jint	Job	Changes		Element: 1 ID: 2New element: 2 - CS/CR/CD-Rotati...	
19.07.2012 10:40:57	HAAKE RheoWi...	Jint	Job	Save as		C:\Documents and Settings\All Users\Documents\Thermo...	test
19.07.2012 10:41:03	HAAKE RheoWi...	Jint	Job run	START	C:\Documents and Sett...		
19.07.2012 10:41:24	HAAKE RheoWi...	Jint	Job run	End	C:\Documents and Sett...		
19.07.2012 10:43:20	HAAKE RheoWi...	Jint	Job	Close	C:\Documents and Sett...		

Because the Audit Trail Viewer program does not offer any editing and storage functions, it is impossible to make changes to the Audit Trail database using this application.

Signatures and security settings

The tool for the electronic signing of job and data files as well as some special security tools are described in this chapter are part of the 21 CFR Part 11 tools and will *only* be installed if an installation of the 21 CFR Part 11 tools is performed.

Note In a standard RheoWin installation (i.e. without 21 CFR Part 11 tools), the tools described in this section are not installed and can, therefore, not be used.

Settings for signatures

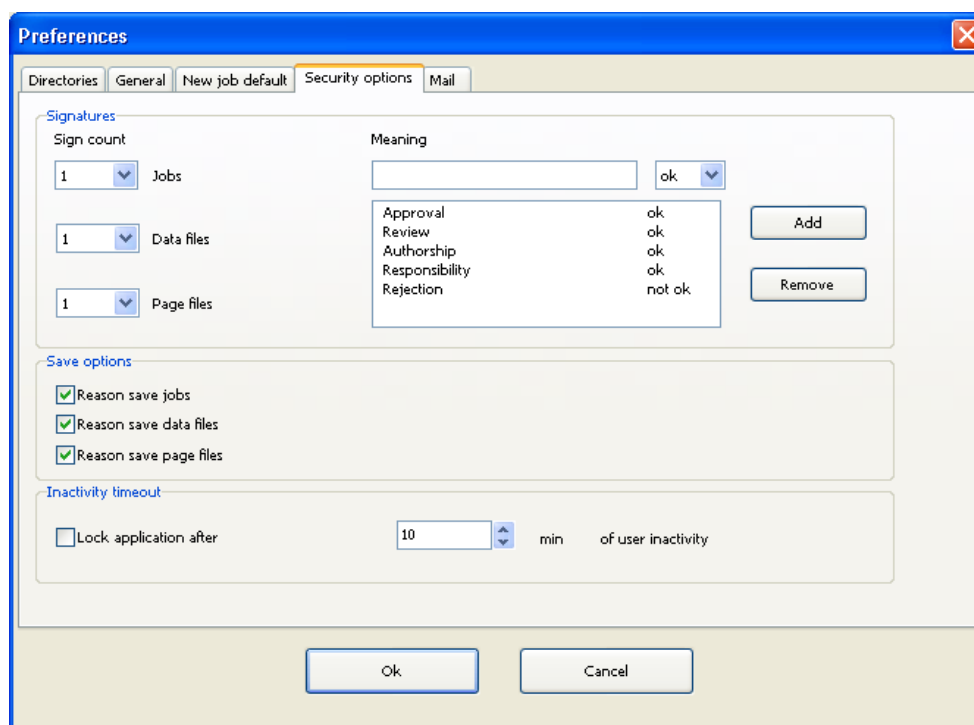
In RheoWin it is possible to electronically sign job, data, and page files (*.rwj, *.rwd, *.rwp). The use of electronic signatures is not mandatory according to the 21 CFR Part 11.

In RheoWin an electronic signature consists of the following attributes:

- The login name of the logged-in RheoWin user.
- The user name of the logged-in RheoWin user.
- The system date and time.
- The meaning of the signature with the criterion **OK** or **Not OK**.

The settings for the electronic signatures must be made (once) on the **Security options** page of the **Settings** dialog. This dialog can be accessed using the **Settings** command in the **Configuration** menu of the RheoWin **JobManager** or RheoWin **DataManager**.

Figure 45. Security options



- **Sign count**

Here the number of signatures that is required for each file type (job, data or page file) in order to complete the signing process for a file (and thus finalize it) can be defined. The default value for all file types is "1". The maximum number of signatures per file type is 5.

A file can (must) be signed as often as required until the preset number of signatures has been reached. The file is then locked, which means that it can no longer be changed (see [Signatures in JobManager](#) and [Signatures in DataManager](#)).

- **Meaning**

A signature must always have a **Meaning**. A user can, for example, sign a file as the **Author**, another user can inspect the file (**Review**) and mark it as **Ok**, and a third user can approve the file (**Approval**) or reject it (**Rejection**). Because the process may differ depending on the company, the meanings of signatures can be modified (added or removed) and thus also be adapted to different languages.

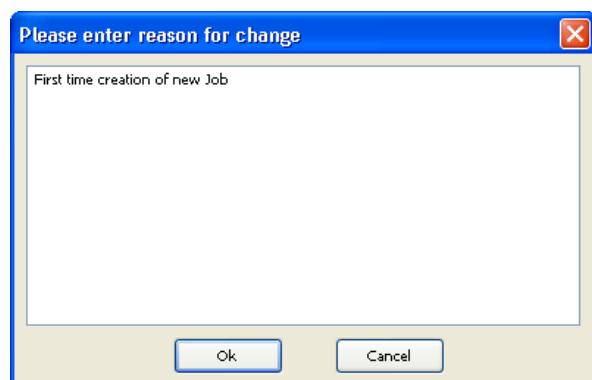
To add a **Meaning** text, the text is first entered in the input field, it must be then be selected (from the **Ok / Not Ok** drop down list) whether the **Meaning** is a confirmation (**Ok**) or a rejection (**Not Ok**). After clicking the **Add** button the new **Meaning** is added to the list and is available for the signatures.

By selecting a **Meaning** in the list and clicking the **Remove** button, the meaning is removed from the list.

Save options

In the **Save options** box it can be selected whether or not the user has to enter a reason for the changes made in a (job or data or page) file whenever the file is saved. If this option is enabled, the user is forced to enter a text justifying the changes made in a data entry dialog box every time he saves a job, data or page file. This reason is stored in the Audit Trail with the relevant file entry.

Figure 46. Enter reason for change



When the 21 CFR Part 11 tools are installed these three options *must* be enabled .

Deactivation in case of inactivity


In the box **Deactivation in case of inactivity**, the option **Deactivation of program after n min without user activity** can be enabled. When this option is enabled RheoWin will be locked after n minutes of user inactivity (i.e. without mouse click activity or keyboard input). Once the mouse is clicked again or a keyboard input is attempted, the RheoWin login dialog will be displayed and the user must login using his login name and password. A job (measurement) that is already inmidst of execution will continue to run even when the RheoWin user interface is locked.

This function is only available in RheoWin versions starting from 4.10.0000, that means that it is not implemented in older versions.

Signatures in JobManager

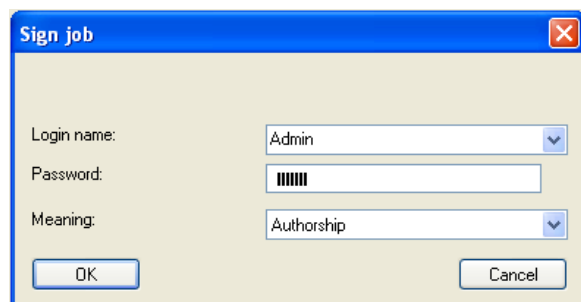
In the RheoWin JobManager *.rwj job files can be electronically signed when the job is opened for editing in the JobEditor.

Signing jobs

A job (that has not yet been completely signed yet) can be signed by selecting the command **Sign job** from the **File** menu of the **JobManager** or by clicking the  Button in the toolbar of the JobManager or by selecting the command **Sign job** from the (right mouse-key) context menu in the **JobEditor**.

These menu items and buttons are only active when the currently logged-in user has been granted the privileges to sign jobs *and* the job is not yet completely signed yet.

Figure 47. Signing a job



In the **Sign job** dialog, a user (the currently logged-in user is pre-selected) must select his login name, enter his **Password** and choose the **Meaning** for the signature in order to sign a job.

After clicking the Ok button, the signature is added to the job file and the job file is saved. In case the job file was not yet saved before attempting to sign the job, for example because the job was just created, the **File save** dialog will be opened, before the **Sign job** dialog was opened, and a file name must be selected first.

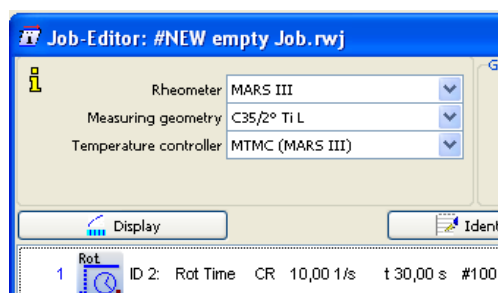
The signing of a job file is recorded in the Audit Trail.

It is not possible to remove a signature from a job file.

As soon as a job file contains at least one signature, it can not be modified anymore, only additional signatures can be entered.

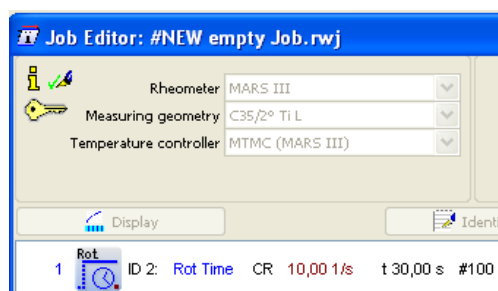
If one or multiple signatures have been entered, but not yet the defined maximum number of signatures, a signature icon will appear in the top left corner of the Job Editor, next to the big yellow "i".

Figure 48. Job Editor, signatures



When the defined maximum number of signatures has been entered, an additional key icon will be displayed in the top left corner of the Job Editor, under the big yellow "i", indicating that the job file is now locked and approved (or rejected).

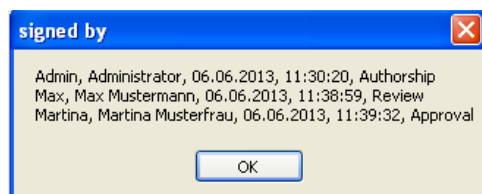
Figure 49. Job Editor, job locked



Displaying the signatures

The signatures entered in a job file can be displayed in a separate window by clicking on the signature icon in the Job Editor or by selecting the **Display signature** command from the (right mouse button) context menu of the Job Editor.

Figure 50. Signatures



Modifying a signed job

A completely signed (locked) job files *cannot be modified anymore*.

In case a completely signed (locked) job file needs to be modified it must be saved under a different name, by using the **Save as** command, first. The thus created new job file will not contain any signatures and can be modified.

Copying a job file will result in an entry in the AuditTrail.

Signatures in DataManager

In the RheoWin DataManager *.rwd data files and *.rwp page files can be electronically signed from the **File** menu.

Signing data files and page files

A data or page file (that has not yet been completely signed yet) can be signed by selecting the command **Sign file** from the **File** menu of the **DataManager**

These menu item (command) is only active when the currently logged-in user has been granted the privilege to sign data and page file *and* the data or page file is not yet completely signed.

Figure 51. Datei signieren



In the **Sign file** dialog, a user (the currently logged-in user is pre-selected) must select his login name, enter his **Password** and choose the **Meaning** for the signature in order to sign a data or page file.

After clicking the **Ok** button, the signature is added to the file and the file is saved.

The signing of a data or page file is recorded in the Audit Trail.

It is not possible to remove a signature from a data or page file.

As soon as a data or page file contains at least one signature, it can not be modified anymore, only additional signatures can be entered.

Displaying the signatures

The signatures entered in a data or page file are directly displayed in the information window under the corresponding file name. The signatures are also shown in a report print-out.

Editing signed data files and page files

Once a job or page file has been signed at least once, it is not possible anymore to make any further changes to that file in the DataManager, evaluation data can not be added or deleted anymore.

In case a completely signed (locked) data or page file needs to be modified it must be saved under a different name, by using the **Save as** command, first. The thus created new data or page file will not contain any signatures and can be modified.

Copying a data or page file will result in an entry in the AuditTrail.

Directories, files, registry

Windows registry key

RheoWin stores all settings, parameters, paths, etc. under the following Windows registry key only (this applies to all versions of Windows):

HKEY_USERS\.\DEFAULT\Software\Thermo\RheoWin

All Windows users that want to use the RheoWin software must have read and write permissions for this registry key.

Installation directories

RheoWin consists of many files which are stored various different directories. Information on which files are stored in which directories can be found below.

Directories for program *.exe, *.dll, etc. files

The default main RheoWin program directory is,

for english and other language 32-bit Windows versions:

C:\Program Files\Thermo\RheoWin

for english and other language 64-bit Windows versions:

C:\Program Files(x86)\Thermo\RheoWin

for german language 32-bit vWindows versions:

C:\Programme\Thermo\RheoWin

for german language 64-bit Windows versions:

C:\Programme(x86)\Thermo\RheoWin

All *.exe, *.dll files belonging to RheoWin are stored in this directory and the corresponding subdirectories. Although it is possible to select another directory for the main RheoWin program directory during the installation, it is not recommended to do so.

Directories for program data files

All RheoWin program data files are stored in the following directory and its subdirectories (this directory can *not* be changed).

Directory for english and other language Windows XP versions:

C:\Documents and Settings\All Users\Application Data\Thermo\RheoWin

Directory for german Windows XP versions:

C:\Dokumente und Einstellungen\All Users\Anwendungsdaten\Thermo\RheoWin

Directory for all Windows Vista, Windows 7 and Windows 8 versions (language independent):

C:\ProgramData\Thermo\RheoWin

Program data files are files that are automatically created and changed by RheoWin, i.e. without direct intervention of the user. Normally it is not necessary that users have direct access to these files.

Table 3. Directories for RheoWin program data files

Directory	File(s)	Usage
\RheoWin	Rheowin.log	RheoWin program log file, for debugging only
\RheoWin\EI\mdll	elmdll.ini	ini file for the RheoWin job-elements, for setting special options only
\RheoWin\Drivers	drivers.flp	in this file are almost all device settings that can be made in the RheoWin DeviceManager are stored
	drivers.ini	ini file for devices, for setting special options only
	*.log	communication log files, for debugging only
	*.err	communication error files, for debugging only
	*.msc	exported MSC table files
	*.mtc	exported MTC table files
	*.tot	exported TOT table files
\RheoWin\Autosave	autosave.rwd	automatically saved copy of the last measured data file
	Drivers_Autosave_x.xx.xx.flp	automatically saved copy of the last Drivers.flp file
	Drivers_Setup_x.xx.xx.flp	automatically saved copy of the setup Drivers.flp file
\RheoWin\UMS	UMS.mdb	The User Management System data base file
\RheoWin\Audittrail	HAAKEAudittrail.mdb	The MS Access Audit Trail data base file

Note In order to be able to view the directories listed above in the Windows Explorer, they must first be made visible. This requires that the **Show hidden files, folders or drives option** is enabled on the **View** page of the **Folder options** dialog in the Windows **Explorer**.
Under Windows XP: The **Folder options** dialog can be opened via the **Folder options** command in the **Tools** menu.
Under Windows Vista, Windows 7 and Windows 8: The **Folder options** dialog is opened via the **Folders and search options** command in the **Organize** menu.

Directories for user files

By default, RheoWin user files are stored in the following directory and its subdirectories (these directory can be changed by the user at any time).

Directory for english and other language Windows XP versions:

C: \Documents and Settings\All Users\Documents\Thermo\RheoWin.

Directory for german language Windows XP versions:

C: \Dokumente und Einstellungen\All Users\Gemeinsame Dokumente\Thermo\RheoWin

Directory for english and other language Windows Vista, Windows 7 and Windows 8 versions:

C: \Users\Public\Public Documents\Thermo\RheoWin

(or C: \Users\Public\Documents\Thermo\RheoWin depending on the representation in the Windows Explorer)

Directory for german Windows Vista, Windows 7 and Windows 8 versions:

C: \Benutzer\Öffentlich\Öffentliche Dokumente\Thermo\RheoWin

User files are files that are created and modified by RheoWin through direct intervention of the user. The following file types fall under this category:

Table 4. Directories for user files

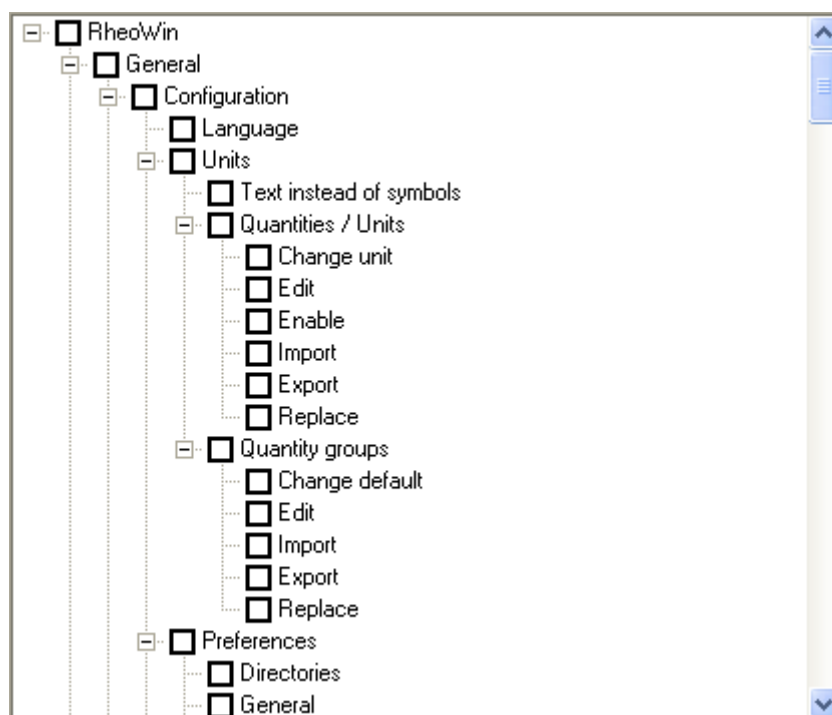
Directory	File(s)	Usage
\RheoWin\Job	*.rwj	Job files
\RheoWin\Data	*.rwd	Data files
\RheoWin\Page	*.rwp	Page files
\RheoWin\Report	*.lst	Report template files
\RheoWin\Template	*.rwt	Job template files
	*.gds	Graph template files
	*.tds	Table template files
	*.rwl	Page template files

User privileges

In total, more than 150 single privileges can be assigned to every user. All privileges can be divided into three categories as shown in the following screenshots.

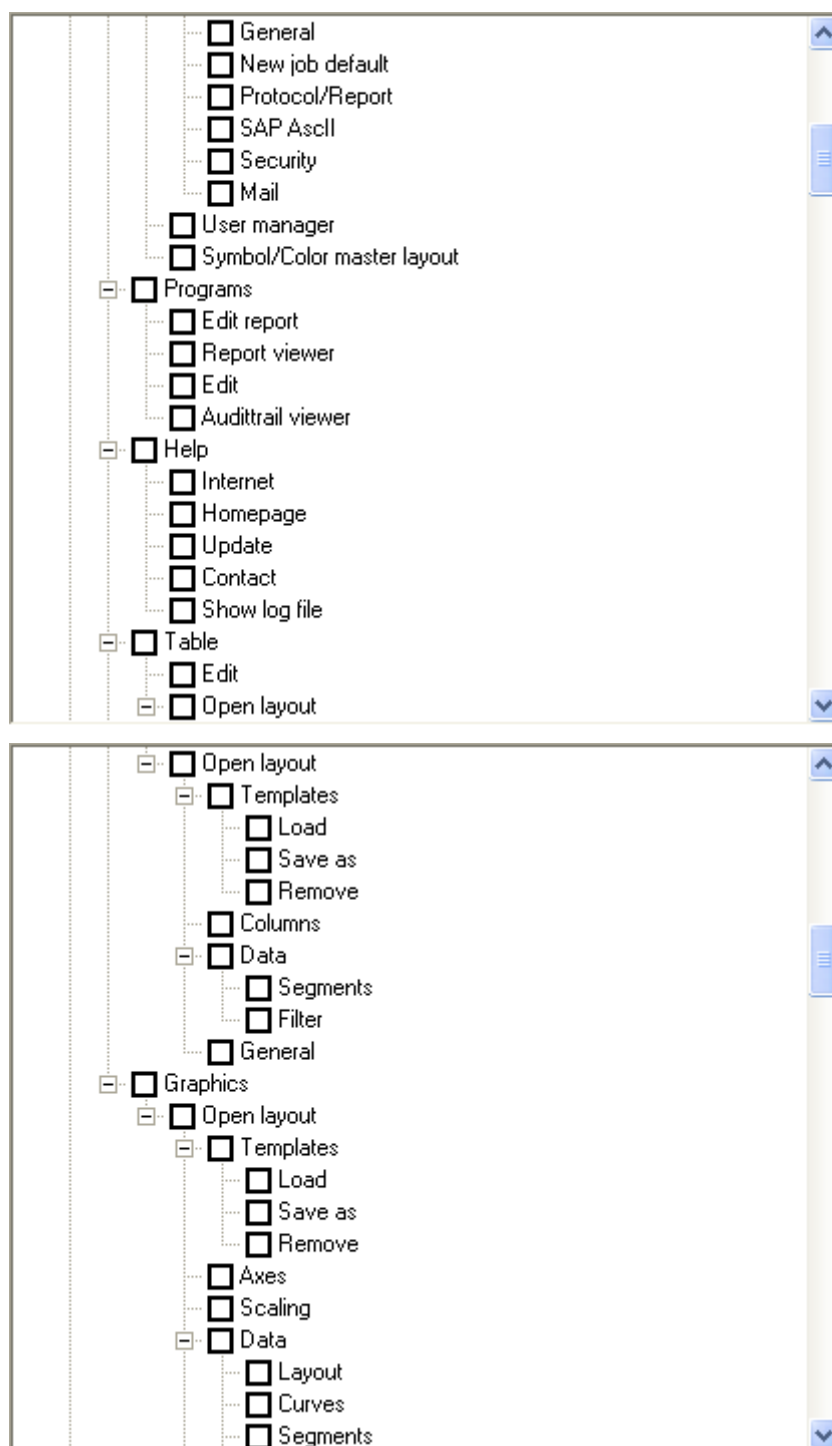
General privileges (in Job- and DataManager)

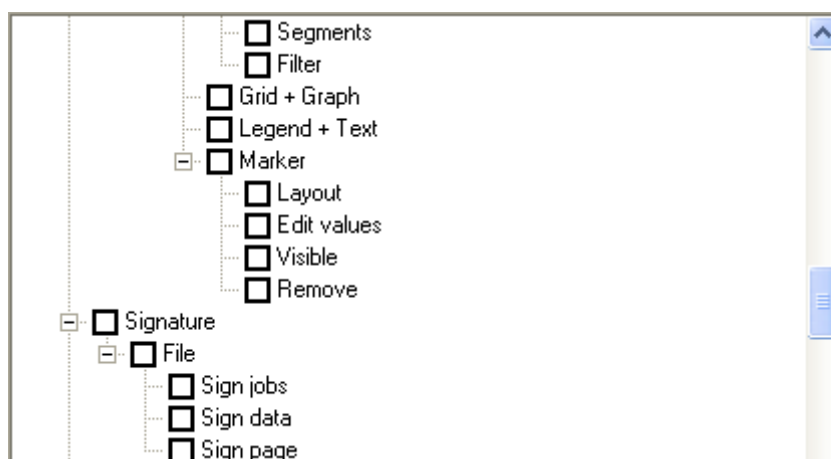
The following privileges relate to functions that are accessible both from the JobManager and the DataManager.



B User privileges

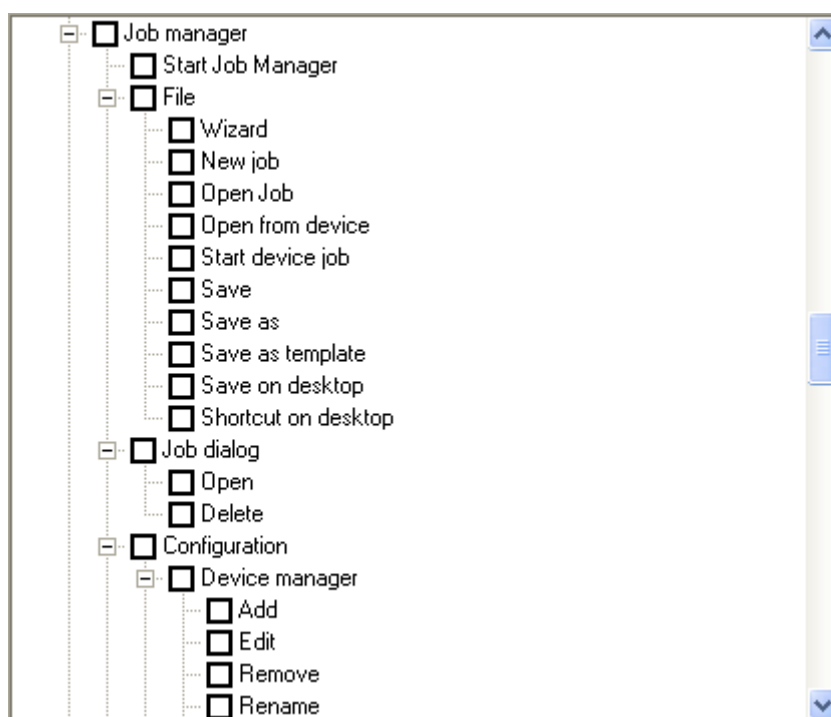
General privileges (in Job- and DataManager)

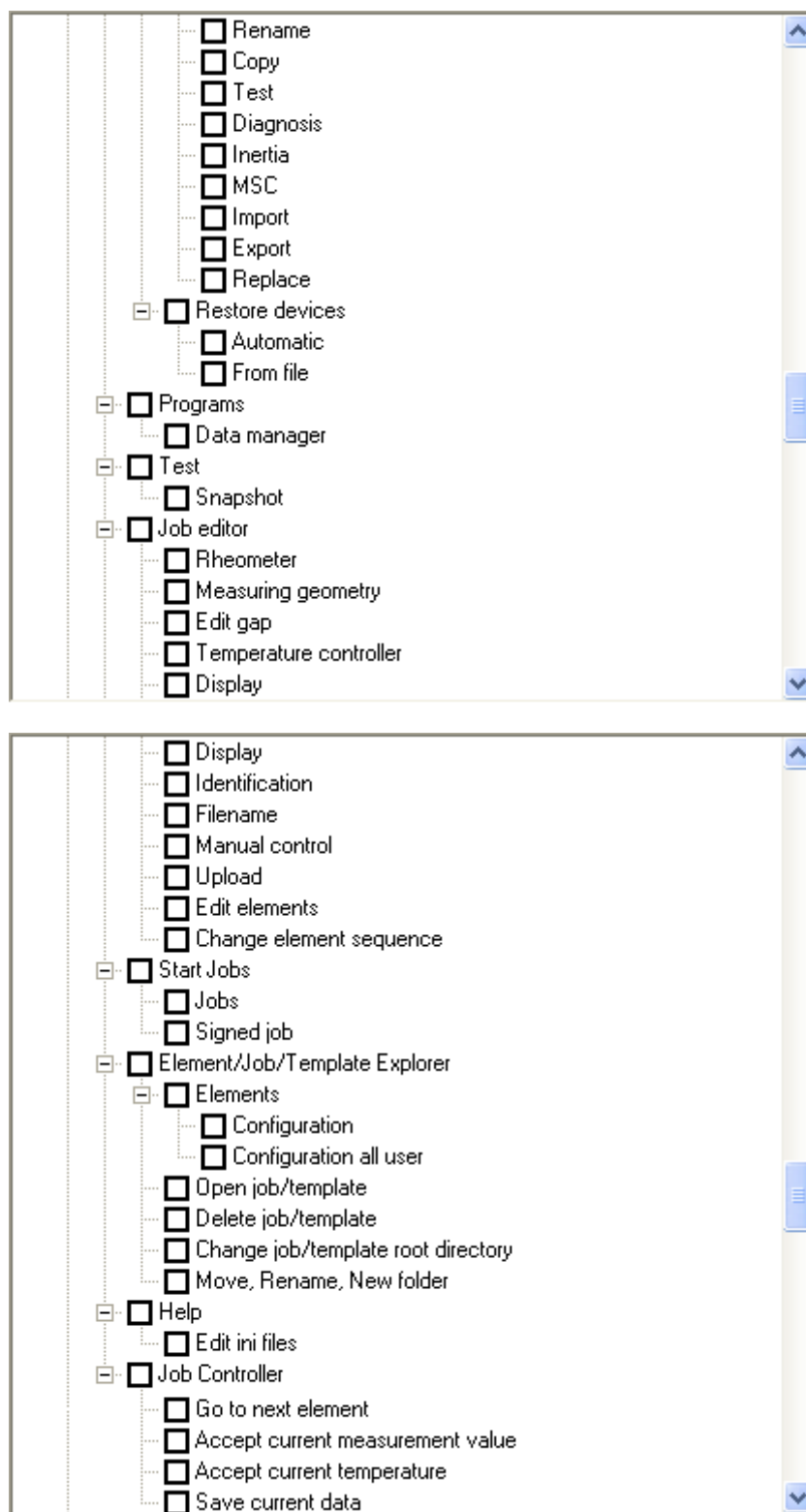




Privileges in JobManager

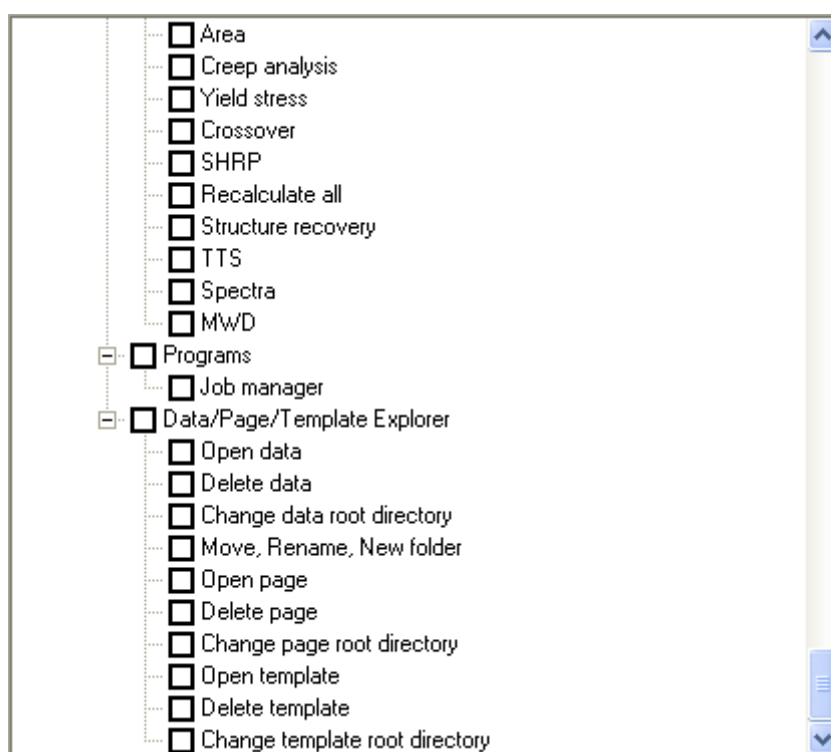
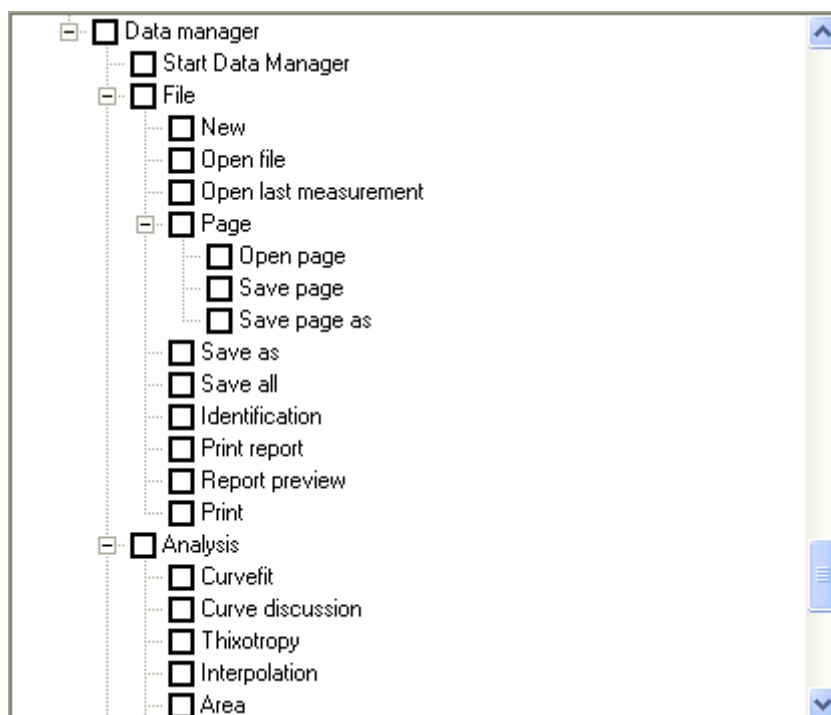
The following privileges refer to functions that are only accessible from the Job Manager.





Privileges in DataManager

The following privileges refer to functions that are only accessible from the DataManager.



Index

A

- Account 33
 - Options 29
 - Status information 29
- Audit Trail
 - Database, Access 38
 - Database, Path to 39
 - Emergency file 39
 - Password 39

C

- Compatibility
 - Circulators 6
 - Rheometer 6
 - RheoWin, older versions 6
 - Temperature control devices 6
 - Viscometer 6
 - Windows versions 3

D

- Deactivation
 - on inactivity 45
- Deinstallation 23
- Directory
 - Program data files 50
 - Program files (*.exe, *.dll, etc.) 49
 - User files 51

F

- File extension
 - *.err 50
 - *.gds 51
 - *.log 50
 - *.lst 51
 - *.msc 50
 - *.mtc 50
 - *.rwd 51
 - *.rwj 51
 - *.rwl 51
 - *.rwp 51

- *.rwt 51
- *.tds 51
- *.tot 50

G

- Groups 30
 - Administrator 31
 - Edit 32

I

- Installation
 - Add 18
 - New version 22
 - Remove 23
 - Start 7
- Interface
 - Firewire (IEEE 1394) 4
 - Serial (RS232) 4
 - TCP/IP 4
 - USB 4

O

- Operating system
 - Requirements 3
 - Version, not compatible 3
 - Windows 2000 3
 - Windows 7 3
 - Windows NT 3
 - Windows Vista 3
 - Windows XP 3

P

- Password 32
 - Age, maximum 33
 - Age, minimum 33
 - Characters 33
 - Rules 33
 - Uniqueness 33
- PC hardware 3
- Privileges

Index: R

- Define [29](#)
- List, DataManager [56](#)
- List, general [53](#)
- List, JobManager [55](#)

R

- Registration key
 - Enter [10](#)
 - Enter, more [11](#)

S

- Signatures
 - DataManager [47](#)
 - Display [47](#)
 - Job file [45](#), [47](#)
 - Meaning [44](#)
 - Number [44](#)
 - Settings [43](#)

U

- User
 - Add [28](#)
 - Admin [27](#)
 - Copy [28](#)
 - Edit [28](#)
 - Logon name [28](#)
 - Password [29](#)
 - Service [28](#)
 - User name [28](#)
- User management [25](#)
 - Accounts [33](#)
 - Activation [25](#)
 - Define privileges [29](#)
 - Edit user [28](#)
 - Groups [30](#)
 - User [27](#)

W

- Windows
 - Access privileges [4](#)